

EAST SUSSEX COUNTY COUNCIL
ROAD TRAFFIC REGULATION ACT 1984

**The East Sussex (Public Footpath Newhaven 7b (part), Newhaven 40a (part),
Newhaven 40b (part))**

(Temporary Footpath Closure) Order 2020

To protect public safety during the construction of the extension of the Newhaven Port Access Road, East Sussex County Council have made an Order under Sections 14(1) and 15(1)(a) of the Road Traffic Regulation Act 1984, as amended, which will temporarily close the following footpaths:

Temporary Footpath Closure

Part of **Public Footpath Newhaven 7b** will be closed to all users between TQ 4540 0059 and TQ 45414 00298 for a distance of 290 metres.

Part of **Public Footpath Newhaven 40a** will be closed to all users between TQ 45414 00288 and TQ 45414 00298 for a distance of 12.3 metres.

Part of **Public Footpath Newhaven 40b** will be closed to all users between TQ 45414 00298 and TQ 4543 0029 for a distance of 22.8 metres.

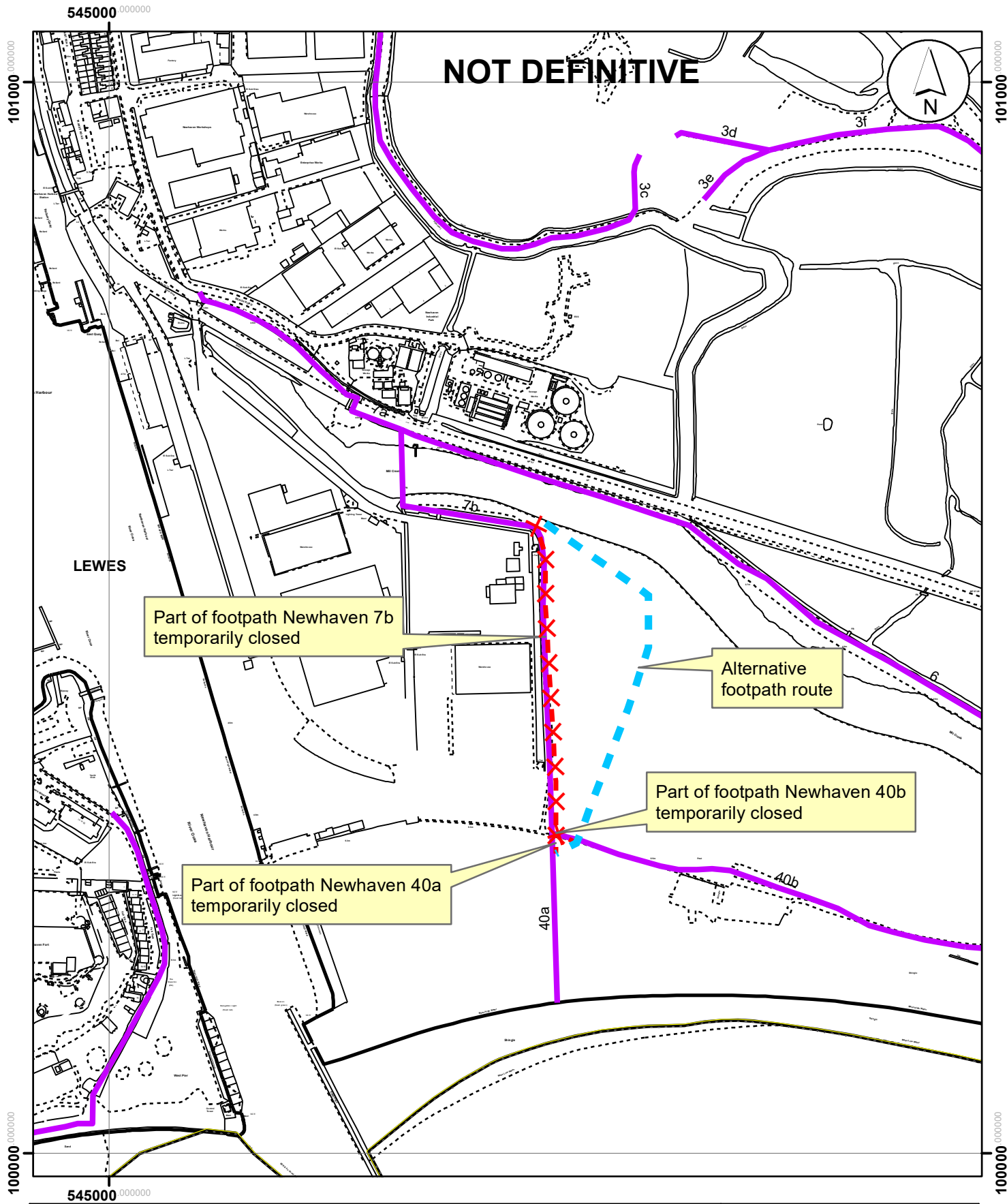
An alternative route will be available close by to the East of the closed routes as detailed on the accompanying map.

The closure will be in force for 6 months from 1 January 2021, or until the works are completed, whichever is the earlier, which after this period will require an extension from the Secretary of State, should the footpaths still be unfit to use.

If you require any further information you should telephone the Rights of Way Office on 0345 60 80 193.

**Philip Baker, Assistant Chief Executive, East Sussex County Council, County
Hall, Lewes, East Sussex BN7 1UE**

25 December 2020



Title: Temporary closure of parts of footpaths Newhaven 7b, Newhaven 40a and Newhaven 40b	
Key: Public Footpath	Public Footpath closed
Alternative route	
Date: November 2020	Map No: TRO/NWV/7b(part)/40a(part)/40b(part)
Scale: 1:4,811	Author: SK

East Sussex County Council
 County Hall
 St Annes Crescent
 Lewes



eastsussex.gov.uk

© East Sussex County Council 2020.
 Aerial Photography © Getmapping.com 2020.
 This map is reproduced from Ordnance Survey material with the permission of Ordnance Survey on behalf of the Controller of Her Majesty's Stationary Office © Crown copyright. Unauthorised reproduction infringes Crown copyright and may lead to prosecution or civil proceedings. 100019601. 2020.