

# Three Year Plan

2005 to 2008



## Index

### **1. 2002 - 2005: History of the East Sussex Children's Fund**

- Project Development
- Management Structure

### **2. 2005-2008: Migration of the Children's Fund**

- County Structures
- Overview of the Main Decisions for the Allocation of Funding for 2005-2008
- Linkworker Projects
- Linkworker long term funding
- Crime Reduction
- Allocation of Remaining Funds
- Participation

### **3. Conclusion**

## **1. 2002 - 2005: History of the East Sussex Children's Fund**

In February 2002 the original proposal for the Children's Fund in East Sussex was submitted and finally agreed in July 2002. This proposal highlighted the "patchy coordination between services" in relation to rapid, effective intervention for children and families. It therefore sought to combat this by focussing on the development of Children and Family Linkworkers based in the 5 Sure Start areas in East Sussex, with an additional project focussing on the Rural areas of the County. Supplementary to Linkworker development it was agreed to ring-fence funds for Parent Support and Children's Activities to ensure that relevant services were developed locally which would meet the needs of Children and Young People as identified in the consultation that had taken place.

### **Project Development**

During the Spring of 2002 a tendering exercise took place to develop the Linkworker Projects, which are now provided by five different agencies:

**Hastings and St Leonards Education Action Zone** - Hastings

**NCH** – Eastbourne and Hailsham

**Newhaven Community Development Association** – Newhaven

**Action In Rural Sussex** – Rural

**Bexhill High School** – Bexhill

Since their inception the Linkworkers (Inclusive Learning Tutors) have developed their work beyond the original plan to "negotiate, coordinate and oversee tailored packages of support for targeted individual children and families" and now offer many services directly such as nurture groups, parenting courses, one-to-one support for children, activities and much more. Their development has shown how much extra was needed from these services and how the original concept needed to evolve.

With each full-time worker taking a caseload of around 10 children for a full term of support, the projects have now reached many local children and young people and have had a recognisable impact on their lives. Most of the projects have reached a larger number of children with the creation of additional services as mentioned above and this has boosted the numbers of children, young people and their parents who have benefited from the interventions developed (see **Appendix 3** - figures for children supported from April to June 2004).

Evaluation of these services has consistently highlighted the positive impact that they have had in terms of supporting young people to attend school and remain in the classroom, thus affecting their personal & educational achievement. There have also been demonstrable changes in the family home for children and their parents and positive effects on social and emotional factors. An independent evaluation took place in 2003/04 and this demonstrated projects' achievement of agreed targets at levels higher than those agreed by the Regional Government Office (see **Appendix 1 - executive summary of the independent evaluation**).

There have been indications that the Projects have had some effect on professionals who observe the Linkworkers or see the results of their practice. In some cases teachers have commented that they have themselves have changed their approach because of the effect of the Linkworker services.

Alongside the Linkworker services many other activity-based programmes have been developed through the Children's Fund. The activities include breakfast clubs, sports activities, cooking classes, inclusion support and creative mechanics. During 2003/04 there were 44 projects supported by the Children's Fund, with 9 other projects focussing on the Youth Offending element of the programme (see **Appendix 9** – Example list of services provided).



In Bexhill and Eastbourne there are specific Activity Coordinator posts to support the development of activity programmes. These are beneficial in that these staff have identified additional funding opportunities and have created links with other resources, thus enabling the contribution of staff or volunteers.

The Voluntary sector has played a significant part in the services provided for the Children's Fund to date (see **Appendix 9**). In some areas they have been the main provider of services. Within East Sussex there is not a wealth of Voluntary providers as in some Counties but still it has been possible to seek their expertise in delivering services. Creatively in Hastings there has been an initiative to support the long-term investment in the Voluntary sector by putting on free training over the past year and the forthcoming year. The aim of this has been to update provider's skills and to support a consistent approach to working with children in their area.

Since the beginning of the fund the amounts spent or allocated to each area were:

<b>Area</b>	<b>2002/03</b> (spend)	<b>2003/04</b> (spend)	<b>2004/05</b> (allocation)	<b>Total</b>
Hastings	£289,756	£315,504	£231,766	£837,026
Eastbourne	£99,266	£234,781	£190,204	£524,251
Newhaven	£48,480	£114,078	£81,806	£244,364
Hailsham	£44,768	£98,389	£94,908	£238,065
Rural	£131,026	£122,313	£141,400	£394,739
Bexhill	£127,706	£203,681	£139,583	£470,970
Participation	£0	£0	£32,462	£32,462
Central Costs	£157,307	£145,275	£123,469	£426,051
Youth Offending	£0	£280,072	£291,164	£571,236
<b>Total</b>	<b>£898,309</b>	<b>£1,514,093</b>	<b>1,326,762</b>	<b>£3,739,164</b>

## **Management Structure**

The Children's Fund has developed a management structure, which is governed centrally by a County Partnership. This group has members from a variety of backgrounds including Health, Social Services, Education and the Voluntary Sector. There is a Local Partnership for each area that supports the County Partnership - its role has been to commission and oversee appropriate projects using the funds allocated to its area. The Chair People from each of these Local Partnerships are members of the County Partnership.

Over the period of the fund the role and focus of the Local Partnerships has changed and in some cases the Partnerships themselves have evolved. In Hailsham the Local Partnership has joined with a local meeting that takes place to support services for Children and Families, whilst in Eastbourne a Schools Consortium has developed, which has accessed additional funding to combine with the Children's Fund money for activities. In Hastings the Local Partnership has developed a 'second tier' group made up of Children's Fund service providers. This group has developed processes and protocols, which have been incorporated into joint practices for providers within the Hastings Partnership. Bexhill has been an active Partnership Group with members working closely together to create and develop activities and services, which have cooperatively supported young people. Like other groups Bexhill has been closely linked to local community meetings and groups and has been instrumental in gaining support for the local area.

## **2. 2005-2008: Migration of the Children's Fund**

### **County Structures**

Within East Sussex there is an active Children and Young People's Strategic Partnership (CYPSP). The Partnership oversees all strategic planning for children and young people within the County. At **Appendix 2** is a diagram showing the current partnership structure including links between are related groups, specialist strategy groups and four area Children's Service Planning Groups. The link with school and service partnerships (currently proposed) is shown in **Appendix 2** page 2.

The role of the CYPSP and the wider partnership structure will be reviewed and clarified further over the next 12 months as part of the development of Children's trust arrangements in East Sussex. Those arrangements will embrace a range of issues from the development of common processes among practitioners (building on the successful CYPSP trailblazer project in Information Sharing) to partnership working between services and schools at local level to co-ordinated strategy and common governance arrangements.

We propose to migrate decision making in relation to the Children's Fund into the new partnership structure associated with the development of Children's Trust arrangements, with effect from April 2006. While the precise partnership structure in 2006 may be slightly different from that shown in **Appendix 2**, the intention is that from that date:

- I. Decision-making at County level will migrate from the Children's Fund County Partnership, which will be disbanded, either into the CYPSP itself or into a new partnership for the 5-13 age range, sitting between the EYDCP, which will become a 0-5 Reference Group, and the Young People's Strategy Group. A decision on the establishment of this sub-group will be taken during 2005 as part of a review of partnerships supporting Trust arrangements. Should a partnership for 5-13 year olds be established, it could advise on a range of issues including child care and extended school provision as well as preventative services for the age range;
- II. Local decision taking will migrate from the current local partnerships, which will be disbanded, to the four area planning groups. At least for an initial period, the decisions of the area planning groups in relation to the use of the Children's Fund will be subject to the approval of the CYPSP or new county 5-13 partnership. This migration will allow the

area planning groups to link decisions on preventative services to decisions on other aspects of children's services planning locally, and the use of other funding streams.

## **Overview of the Main Decisions for the Allocation of Funding for 2005-2008**

The East Sussex Children's Fund has an allocation of **£3,249,450** for 2005-2008. The County Partnership made the decision that a sub group should be formed to discuss how these funds would best be allocated.

The sub group met on two occasions in October 2004 and made recommendations to the County Partnership on the 8<sup>th</sup> November, which were approved in principle

### **Linkworker Projects**

All Linkworker Projects will be prioritised for ring-fenced subsidy for the remaining life of the Children's Fund (see **Appendix 6** page 2 – list of services for 2005 onwards). This decision was based on the good practice that has been observed in all of these services (see **Appendix 1**), along with recognition that this was a valuable model of intervention that was not replicated elsewhere in the County. Recognition is given in this decision to the collective services that result from the funding of the Linkworker projects in that both Children's services are offered and family support is given by each project. It was also felt that learning from these models was transferable to other local services within the County.

Agreement was made that these projects will be re-developed where necessary to ensure that they now work towards the outcomes described in "Every Child Matters" (see **Appendix 7**) and the "National Service Framework for Children, Young People and Maternity Services" (see **Appendix 8**). Taking the outcomes mentioned within these two documents, these projects would therefore receive amended Service Level Agreements, which outline these outcomes and the agreed measures to be used. This will then be in line with the Government and County aim to rationalise the number of plans required and will demonstrate the current integrated approach to service delivery.

Currently East Sussex is involved in the development of a Common Assessment Framework, which will have an impact on the Linkworker services. As these services have been working closely together to date and all are involved in the IRT (Information Sharing) development, these projects will be well advanced in their integration of this model.



Included in the re-development of the Service Level Agreements there will also be a clear requirement for the involvement of Children and Young People in the overseeing of the Quality Assurance of the services. This will commit providers to the demonstrable inclusion of this group.

In support of evaluation and monitoring of the projects in 2004 there was a commitment from the County Partnership to purchase a bespoke programme called "Viewpoint", which has been designed to seek the views and experiences of young people and their parents about the services that they have received. This programme has been designed specifically for East Sussex with an initial part of the programme, which seeks details regarding the young people around the referral, school, health and personal well being so that these can be monitored from the outset. This tool will support the County in looking at who is using the Linkworker Services, why and what they think of these services.

It is considered that the process for the Quality Assurance of these projects will be linked with the cross County development of outcome measures for all similar projects, observed by any Joint Inspection Framework that is developed. At this time this piece of work is not completed and so cannot be demonstrated within the time constraints of this Plan. Currently a time-scale for completion of the targets set for these projects would be before the Service Level Agreements are produced for April 2005 onwards.

### **Linkworker long term funding**

At the County Partnership meeting there was agreement that the Linkworker Projects needed to consider their own long-term sustainability and therefore it was felt that it was not appropriate to fully fund the projects until the end of the Fund in 2008. It was proposed that these projects have a tapered funding of 80% and 60% for the final two years of the Fund to encourage stakeholders to consider the financial support necessary to maintain full service levels. It is intended that development of these services take place over this period as more stakeholders realise the potential for these services and therefore consider financial investment.

## **Crime Reduction**

Although all of the services provided by the Children's Fund have an element of prevention and in the Linkworker and Activity based projects to date this has been demonstrated, East Sussex recognises the particular need to support Children and Young People away from or out of crime.

With a particular focus on this it was agreed at the County Partnership that the current commitment of 25% (after central costs) of the Fund would continue to be ring-fenced with regards to the Youth Offending element of the allocation. This will secure some of the larger YOT projects for the life of the Children's Fund, but again, funding will be tapered to 80% and 60% to encourage providers to consider long-term sustainability.

The Youth Offending money has previously supported three main projects within the County. In Eastbourne there is a project that is provided by the Youth Offending Team (YOT) directly. This project has workers based at two of the local schools offering services such as Anger Management, Victim Awareness and Behaviour Management.

In Hastings the service is currently run alongside the Linkworker (Inclusive learning Tutor) project provided by the Education Action Zone. This project has worked closely with other providers in the area to support vulnerable young people. Specifically in Hastings one of the workers has a Health Bias and focuses both on the foundation stage and the 8-14 age group in order to identify issues and provide services. Particular attention is paid to speech and language development, where there is a proven correlation between problems in these areas and offending.

In Bexhill an Inclusion Project has been developed to support young people who have been or are likely to be involved in crime. This project takes young people for half a day, four times a week and involves them creatively in education and social skills. The project was re-developed in April 2004 and current indications are that the young people are engaging well and are demonstrating positive outcomes as a result of this project.

## Allocation of Remaining Funds

The tapering of both Linkworker and YOT Projects will have the benefit of releasing funds, which could then be allocated to support other innovative services.



The funds available will be shared across the 4 PCT boundary areas, using a model developed from the Indices of Multiple Deprivation 2004 along with the actual numbers of children known to live within the Super Output Areas falling within the top 50% most deprived in the country (see **Appendix 4 and 5**).

This new model of funding was developed to supersede the allocation formula used in previous years, taking into account the changes recorded in the Indices of Multiple Deprivation 2004 (IMD 2004). The model uses the Super Output Areas (SOA's) identified within the IMD 2004 and the actual number of children living within the most deprived households falling within the top 50% of these across the whole country. Given that Hastings has 12 and Eastbourne has 1 of the 13 SOA's, which fall within the top 10% of those most deprived across the whole country, a weighting was created to give a supplement to these areas (see **Appendix 5**).

The decision to work within the PCT boundary areas is a change in terms of the geographic allocation of funding, as previously the money had been allocated to the 5 defined Sure Start areas, which are now expanding because of the development of the 10 Children's Centres within the County. The decision now is to allocate all money to the four Primary Care Trust (PCT) boundary areas for the Children's Services Planning Groups to distribute in accordance with their Children's Services Planning. This may mean that in some PCT boundary areas the allocation of money from the Children's Fund may be focussed in one or more specific areas where children are seen to be specifically vulnerable, rather than shared across the County area.

The decision to move the allocation of money to the PCT boundary areas is in line with the future thinking from the CYPSP in terms of joined up working between agencies within a given boundary area to ensure local and Countywide strategies are developed and enhanced by cooperative working. However, this change would mean that calculations would now be based on larger areas and therefore no separate rural allocation would be made other than to continue to support the COPES project provided by Action In Rural Sussex. This decision recognises that support for Rural areas would now

come from within those PCT Boundary areas covering rural populations. There was discussion, therefore, within the Partnership regarding the need for decision makers to consider taking particular care when making agreements for the allocation of the Children's Fund money across rural areas to ensure that regard is given to the increased costs of services here because of the spread or inaccessibility of the population.

Currently no decision for the specific allocation of these funds to services has been taken and so there is no possibility of describing what activities will be created and who the providers of these might be. However, for the commissioning of these services there will be a written commitment to the Children's Services Planning Groups to consider the development of services with the unallocated money through the use of the Voluntary Sector, where appropriate, as this group of providers has played a significant part in this Fund to date. Additionally in consideration of the development of any new services and the monitoring of any existing services a commitment to the involvement of Children and Young People will be included in each contract.

With regards to the unallocated money, which has been earmarked for Youth Offending, there are currently suggestions for the creation of new services or the re-modelling of existing services using this. One suggestion is the new creation of a Youth Inclusion Support Panel in Hastings. This area already has a strong network of professionals who work closely together to support services for young people and therefore it is envisaged that this new panel will be easily initiated. At present this is a very new proposal and has not been fully approved, but early signs are positive from those involved.

## **Participation**



East Sussex County Council is supporting the development of a cooperative arrangement of Participation workers within the County. This new team is in early development but it is considered that they will support professionals and providers of services with the task of including children and young people in service planning and monitoring. Using the particular experience and skills of these workers providers and professionals will be able to contact this service for support and guidance to enable the effective involvement of children and young people in their services or meetings.

In advance of this the Children's Fund has commissioned in 2004/05 the development of 6 workshops to take place across the County (see **Appendix 10-** agreed proposal). These will focus fully on the involvement of Children and Young People at all levels of service delivery and will be open to all providers of services and partnership members across the County. The workshops will be in line with the CYPSP and Youth Development Service aims for working with Children and Young People in East Sussex.

### **3. Conclusion**



The money that has been allocated to East Sussex from the Children's Fund will continue to support the good work that has taken place across the County but in itself there are constraints because this money is not enough to sustain many of the projects that have been taking place alongside the Linkworker projects. In some areas additional money has been secured to supply additional Linkworkers, which is a good sign for their sustainability but by no means gives full security. Other areas have secured short-term money for additional activities to compliment the work of the Children's Fund but it is recognised that this money is time limited so further support needs to be given to a strategy for long-term investment in these important services.

The importance of prevention and planning to sustain the Children's Fund services is clearly recognised in the proposed CYPSP Strategic Plan for 2005-06 (currently in draft). Whilst there is much work still to be completed with regards to the Children's Trust, Extended Schools Programme and Children's Centres, the County is well focussed and is managing to maintain open discussion to support future planning.

Presently there is agreement that the significant subsidy for the Linkworker Projects will remain in place for the term of the Children's Fund and the effect of this on the Local areas should be demonstrated as positive given the experiences of the projects to date. Over the coming year there will be the relevant changes made to the Service level Agreements that the projects have to re-focus their targets towards the relevant Government Outcomes. This will be in line with the same pieces of work being carried out across the County to bring all services in line with agreed targets.

The impact of this decision does limit the amount of money that is left available for other innovative projects and this is something that the County Partnership has considered. Making the change to where the money is

allocated was a decision that the County Partnership agreed and this brings this in line with the Children's Services Planning groups in the separate areas of the County.

## Appendix 1



### Dreyfus Evaluation - Executive Summary Feedback

- All the Link Worker/ILT/COPES initiatives are found to be delivering an excellent standard of service and are rated very highly by users.
- All the teams are made up of workers from a variety of different disciplines but who have complementary skills. This has enabled them to draw on their collective experiences to problem solve collaboratively and effectively. This, in turn, has fostered a culture of mutual respect and resulted in a strengthening of the teams' ethos and commitment. Line Managers have actively encouraged this approach.
- The professionalism of all the Link/Outreach Workers and ILTs has been commended by everyone involved with them
- It is a real strength of the projects that they are seen as independent of schools and mainstream agencies.
- The ability of the Link/Outreach Workers and ILTs to respond quickly and appropriately to a variety of needs is much appreciated by schools and by families.
- It was repeatedly stressed by parents that the Link/Outreach Workers and ILTs operated in a supportive, non-judgemental fashion. This has been a vital factor in creating a climate of trust. Without this, the interventions would not have succeeded as they have.
- Schools saw the Link/Outreach Workers and ILTs as playing a pivotal role in making the goal of inclusive education a reality through the professional support they gave to teachers and the educational and emotional support they gave to children and their families who were otherwise disengaging from the education process.
- The initiatives have had the effect of helping teaching staff reflect on the type of strategies they use when dealing with children and their families.
- The attendance, behaviour, social skills and levels of attainment of the majority of children involved in the projects have been raised. Although COPES is not yet in position to deliver hard data on achievement the early indications are that it will be as successful as the projects elsewhere in East Sussex.
- Parents expressed their appreciation of the practical support and advice they had been given by the workers even in the cases where their children were still presenting extremely challenging behaviour both at home and in school. They also appreciated the courses and support groups arranged for them.
- There was an appreciation on the part of schools that the Link/Outreach Workers and ILTs had access to services and information that they didn't. The Link/Outreach Workers and ILTs are proving themselves skilled at matching children and families with available services. They have also taken the necessary

steps to make these services accessible by taking the child or family to them, by providing transport and by acting as their advocate and advisor in the face of 'officialdom'.

- Nearly all parents and teaching staff interviewed strongly expressed the view that the Link Worker/ILT/outreach programmes were beneficial and should be extended.
- It is clear that the initiatives have improved communications and cooperation between families and schools by Link/Outreach/Workers and ILTs acting as 'honest brokers' and building trust between parents and teachers.
- It has emerged that the complex and deep-seated needs of some children and their families cannot be addressed adequately within a framework of thirteen weeks. This has implications for the referral process. Indeed many schools have stressed that they are now referring children and families who are not at crisis point.
- Teaching staff at Key Stage One highlighted the fact that the work done by the Link/Outreach Workers and ILTs in the family home with the parent/s was crucial and had an appreciable effect on the children's ability to succeed at school.

### Linkworker/Inclusive Learning Tutor Feedback:

- 100% of the children said that they had enjoyed working with their Link Worker
- 100% of the parents interviewed expressed the view that the Link Workers had done everything they could to support them and their children.
- 100% of the parents said they strongly agreed that the intervention by the Link Workers had been worthwhile.
- 100% of the Head teachers and SENCOs interviewed strongly agreed that the Link Workers had done all they could to support the children and families with whom they were involved.
- 85% of the children for whom behaviour had originally been an issue showed a continued improvement.
- 93% of the children maintained an improvement in their social skills.
- 70% felt their children's attitude to school had continued to improve since the intervention
- 70% reported that their children's attitude to other children had continued to improve since the intervention

### **Comments made were:**

*"The worker is calm and doesn't put my child under pressure. She's got a very good relationship with him...It's having a positive effect on every pocket of his life."*

*"She (the outreach worker) listens to me ....She stops me going mad ... She offers advice in a friendly way."*

*"She's (The outreach worker) someone I trust and am happy to have in my home."*

*"My child looks forward to her visits and so do I."*

**Appendix 2**  
Figure 1

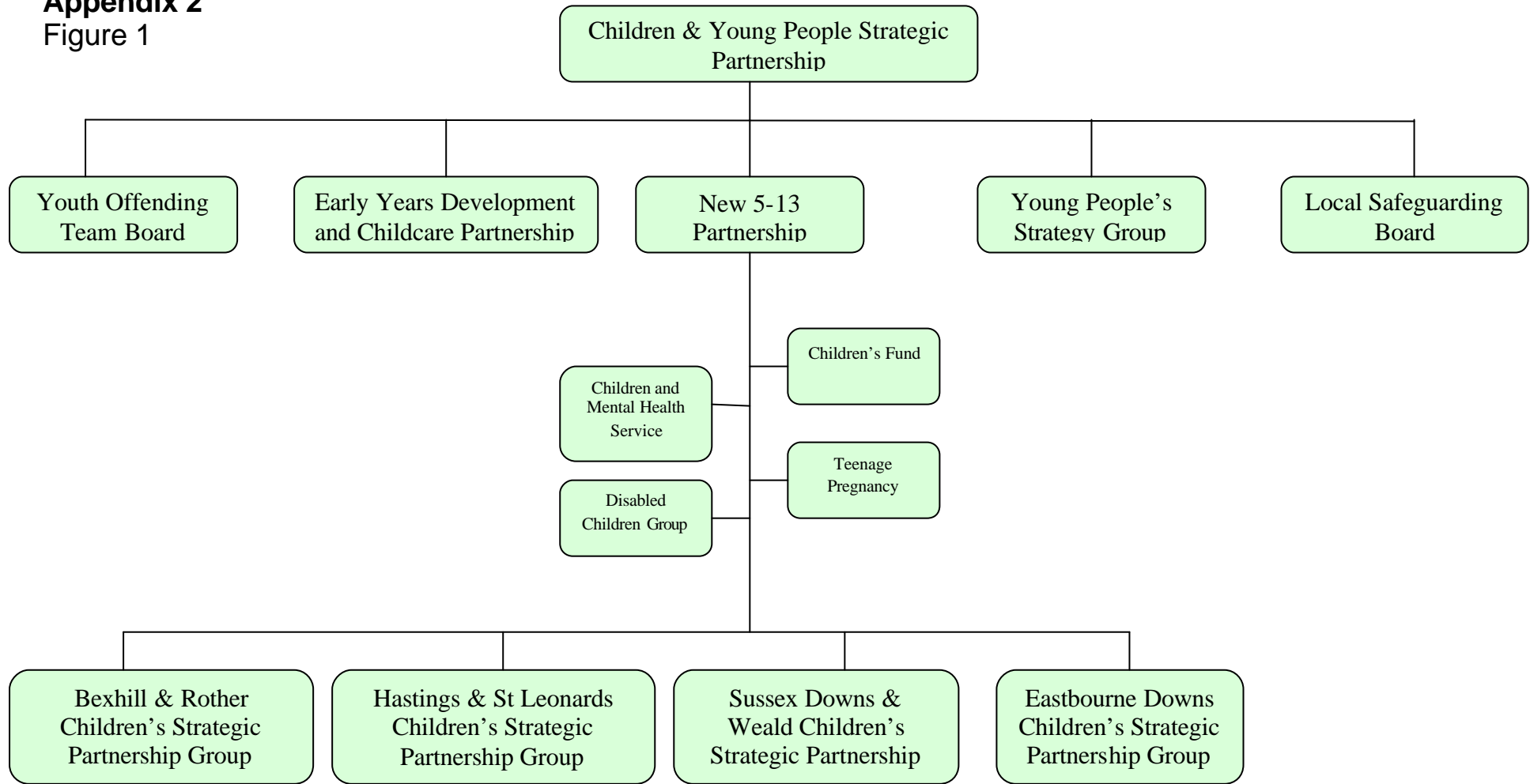
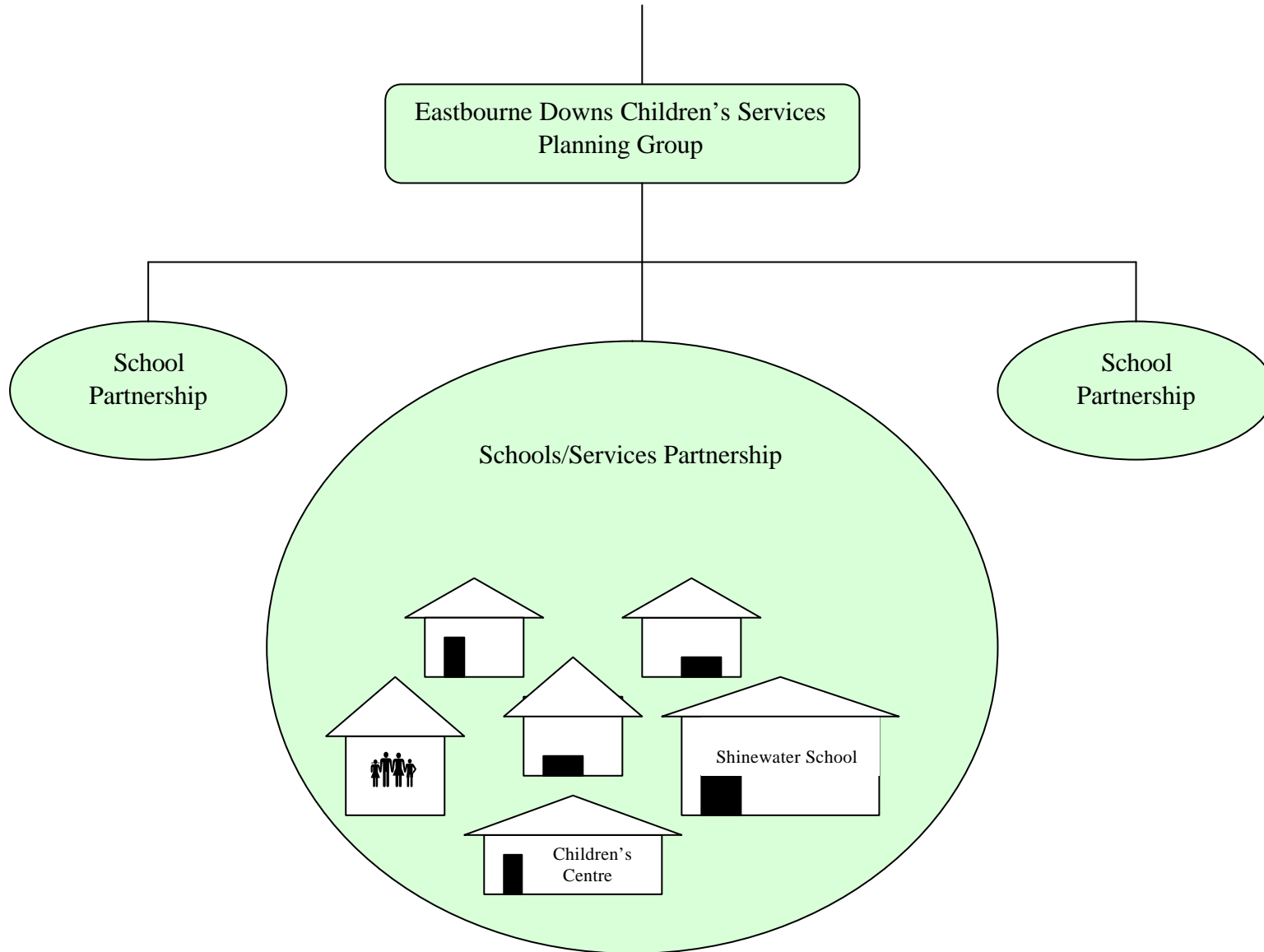
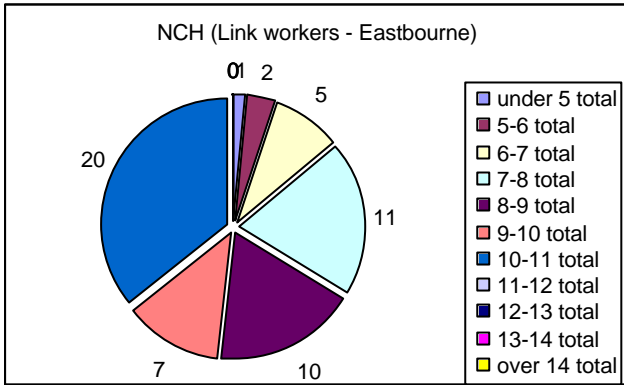


Figure 2

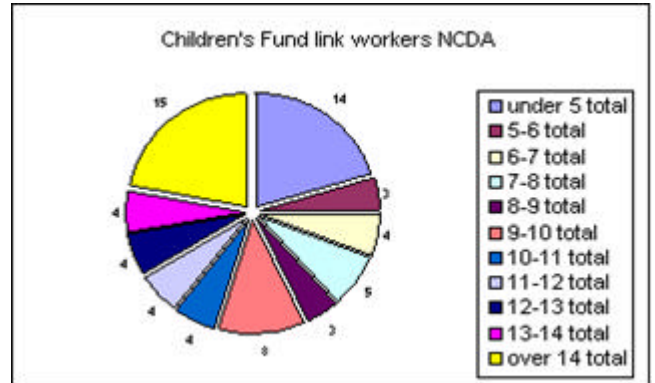


## Appendix 3

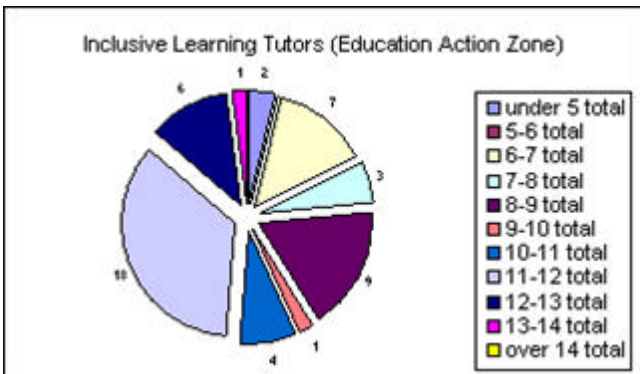
Total Number of Linkworkers = 3  
 Total number of Children supported= 56



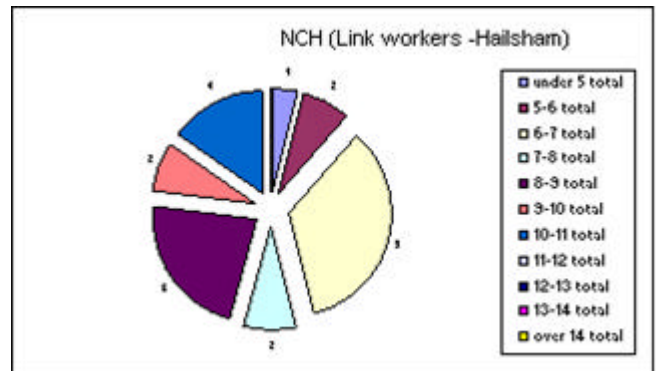
Total Number of Linkworkers = 3  
 Total number of Children supported= 56



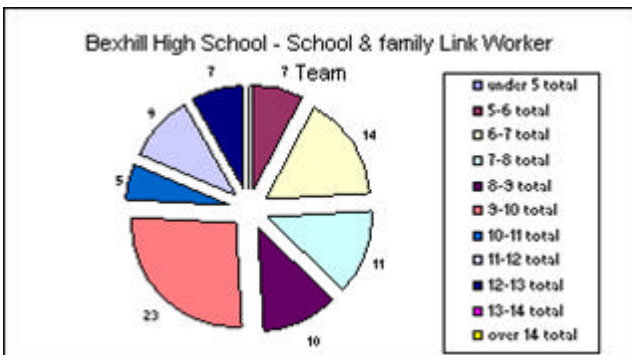
Total Number of Linkworkers = 4.5  
 Total number of Children supported= 51



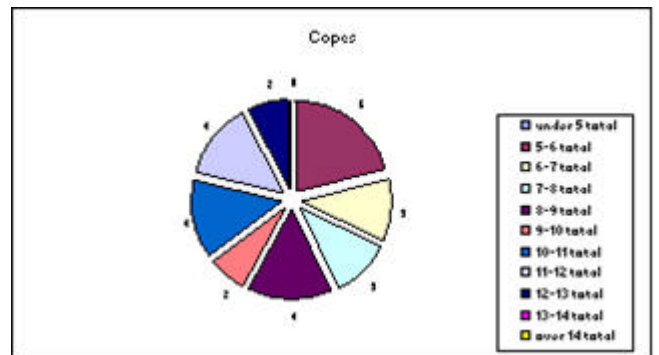
Total Number of Linkworkers = 2  
 Total number of Children supported= 26



Total Number of Linkworkers = 3.5  
 Total number of Children supported= 86



Total Number of Linkworkers = 1.5  
 Total number of Children supported= 28



## Appendix 8

# National Service Framework for Children, Young People and Maternity Services

## List of Standards

### Standard 1:

#### **Promoting Health and Well-being, Identifying Needs and Intervening Early**

The health and well-being of all children and young people is promoted and delivered through a co-ordinated programme of action, including prevention and early intervention wherever possible, to ensure long term gain, led by the NHS in partnership with local authorities.

### Standard 2: Supporting parents or carers

Parents or carers are enabled to receive the information, services and support which will help them to care for their children and equip them with the skills they need to ensure that their children have optimum life chances and are healthy and safe.

### Standard 3: Child, Young Person and Family-Centred Services

Children and young people and families receive high quality services which are coordinated around their individual and family needs and take account of their views.

### Standard 4: Growing Up into Adulthood

All young people have access to age-appropriate services which are responsive to their specific needs as they grow into adulthood.

### Standard 5:

#### **Safeguarding and Promoting the Welfare of Children and Young People**

All agencies work to prevent children suffering harm and to promote their welfare, provide them with the services they require to address their identified needs and safeguard children who are being or who are likely to be harmed.

## PART II

### Standard 6: Children and Young People who are Ill

All children and young people who are ill, or thought to be ill, or injured will have timely access to appropriate advice and to effective services which address their health, social, educational and emotional needs throughout the period of their illness.

### Standard 7: Children in Hospital

Children and young people receive high quality, evidence-based hospital care, developed through clinical governance and delivered in appropriate settings.

**Standard 8:****Disabled Children and Young People and Those with Complex Health Needs**

Children and young people who are disabled or who have complex health needs receive co-ordinated, high quality child and family-centred services which are

based on assessed needs, which promote social inclusion and, where possible, which enable them and their families to live ordinary lives.

**Standard 9:****The Mental Health and Psychological Well-being of Children and Young People**

All children and young people, from birth to their eighteenth birthday, who have mental health problems and disorders have access to timely, integrated, high quality multidisciplinary mental health services to ensure effective assessment, treatment and support, for them, and their families.

**Standard 10: Medicines Management for Children**

Children, young people, their parents or carers, and health care professionals in all settings make decisions about medicines based on sound information about risk and benefit. They have access to safe and effective medicines that are prescribed on the basis of the best available evidence.

## Appendix 7

# Every child matters



- **being healthy:** enjoying good physical and mental health and living a healthy lifestyle
- **staying safe:** being protected from harm and neglect
- **enjoying and achieving:** getting the most out of life and developing the skills for adulthood
- **making a positive contribution:** being involved with the community and society and not engaging in anti-social or offending behaviour
- **economic well-being:** not being prevented by economic disadvantage from achieving their full potential in life.

## Appendix 9

### Example of Projects Provided within 2003/04 from the Children's Fund Allocation

("v" denotes Voluntary Organisation)

Project	Contact Details	Funding Allocated (£'s)
<b>Eastbourne</b>		
(17) Out of school Activities	<b>Bourne C.P School</b> Bourne CP School Melbourne Road Eastbourne BN22 8BD	£6,400
(19) After school activities for Children	<b>The Causeway School</b> The Causeway School Larkspur Drive Eastbourne East Sussex BN23 8EJ	£6,210
(15) Out of school hours activities/Homework Club (Child Support) & Extra Services	<b>Eastbourne Technology College</b> Eastbourne Technology College Brodrick Road Eastbourne East Sussex BN22 9JU	£6,754 (6,750)
		£5,000
		£11,750
(14) Parenting Club	<b>Eastbourne Technology College</b> Eastbourne Technology College Brodrick Road Eastbourne East Sussex BN22 9JU	£9,508 (£9510)
(24) Webster Stratton Parenting Group	<b>Eastbourne Downs PCT</b> Avenue House The Avenue Eastbourne BN21 3XY	£6,638 (£6,640)
(44) Breakfast Club	<b>Oakwood Primary School</b> Oakwood School Magnolia Drive Eastbourne BN22 0SS	£6,000
(20) Activities Co-ordinator	<b>Bourne/Oakwood/Shaft</b> Oakwood School Magnolia Drive Eastbourne BN22 0SS	£12,500
Children's Activity Worker	<b>Shaftesbury Society (v)</b> The Shaftesbury Centre Milfoil Drive Shinewater Eastbourne East Sussex BN23 8BR	£15,000
Additional Children's Activities	<b>Shaftesbury Society (v)</b> The Shaftesbury Centre Milfoil Drive Shinewater Eastbourne East Sussex BN23 8BR	£1,250
(22) Activities for Children	<b>West Rise Jnr School</b> Chaffinch Road Langney Eastbourne	£4,450

<b>Eastbourne</b>		
Admin Staff	<b>Oakwood Primary School</b> Oakwood School Magnolia Drive Eastbourne BN22 0SS	£1,759 allocated £3516
(07) Link Workers	<b>NCH (v)</b> 48 Upperton Gardens Eastbourne East Sussex BN21 2AQ	£136,387
Out of school activities	<b>Bourne CP School</b> Melbourne Road Eastbourne BN22 8BD	£2,970 <b>Allocated</b> £2,413
P.A.Y.P	<b>P.A.Y.P</b> The Charles Jewell Centre 56-58 Seaside Eastbourne BN22 7QK	£40,000 <b>Allocated</b> £40,000

<b>Bexhill</b>		
(30) Activities Development Worker	<b>Bexhill High School</b> Bexhill High School Down Road Bexhill-on-Sea TN39 4HT	£15,300 £520 £2000 £4000 <b>= £21,820</b>
(40) Art-café-on-the-beach Activities for Children	<b>Rother District Council</b> 14 Beeching Road Bexhill on Sea East Sussex TN39 3LG	£2,000
(06) School and Family Link workers	<b>Bexhill High School</b> Bexhill High School Down Road Bexhill-on-Sea TN39 4HT	£112,200 £5,600 <b>= £117,800</b>
(18) After School Clubs (Shooting Stars)	<b>Sidley Community Association (v)</b> 121 Ninfield Road Bexhill on Sea East Sussex TN29 5BD	£5,000
Therapy Support	<b>NCH (v)</b> Tall Trees Family Centre 53 Turkey Road, Bexhill-on-Sea TN39 3LR	£15,000
Community Development Worker	Richard Watson <b>Sure Start</b> Programme Manager 130 Dorset Road Bexhill on Sea TN40 2HT	£13,000 £300 £3000 <b>= £16,300</b> <b>Requested £19,229</b>
CF Publicity	<b>Local partnership (v)</b>	£4,000 changed to £2,219
Saturday Morning Activity Clubs	<b>Bexhill Activity Coordinator</b>	£30,000

<b>Hailsham</b>		
(35) Out of school activities	<b>Marshland Primary School (for local schools)</b> Marshlands Primary School Marshfoot Lane Hailsham BN27 2PH	£8,945 changed to £0
(07) Link Workers	<b>NCH (v)</b> 48 Upperton Gardens Eastbourne East Sussex BN21 2AQ	£66,240
(12) Playscheme Activities	<b>Hailsham East Community Trust (v)</b> Hailsham East Community Centre Vega Close Hailsham East Sussex BN27 2JZ	£8,739
Admin		£5,520
Educational Visits	<b>Marshlands School</b>	£4,428 <b>Allocated</b> £4,428
(37) Hailsham Fathers	<b>Sure Start</b> Hailsham East Community Centre Vega Close Hailsham East Sussex BN27 2JZ	£10,570

<b>Hastings</b>		
(16) ESPP – ESCH Parenting Support	<b>East Sussex County Health Care Trust</b> CAHMS Sturton Place Station Road Hailsham BN27 2AU	£12,850
(02) Link Workers	<b>Education Action Zone</b> Marshall Tufflex Building 1 Theaklen Drive St Leonards-on-Sea	£162,130
(21) Activity Work Shops	<b>Fellowship of St. Nicholas (v)</b> St Nicholas Centre St Leonards on Sea 66 London Road East Sussex TN37 6AS	£22,170
Nick's Place Activity Workshops (2)	<b>Fellowship of St. Nicholas (v)</b> St Nicholas Centre St Leonards on Sea 66 London Road East Sussex TN37 6AS	£16,594
Training for Service Providers	<b>Education Action Zone</b> Marshall Tufflex Building 1 Theaklen Drive St Leonards-on-Sea	£6,440
One-to-one out of school activity support	<b>Education Action Zone</b> Marshall Tufflex Building 1 Theaklen Drive St Leonards-on-Sea	Requested £7,645.60 allocated

( 25) Children activity based club	<b>YMCA (v)</b> 'Y' Sports Centre St Paul's Road St Leonards on Sea East Sussex TN37 6RS	£10,260
(26) Parenting	<b>Ore Valley Forum (v)</b> c/o Priory Neighbourhood Centre 361 Priory Road Hastings TN34 3NW	£6,120 changed to £3,060
(23) Challenging Children	<b>Care for the Carers (v)</b> Braymer House 28 St Leonards Road Eastbourne Bn21 3UT	£7,530
ADHD Support Group	<b>ADHD Support Group</b> Sure Start 46-48 Chiltern Drive Hastings TN34 3PZ	£8,160
( 13) Out of hours provision/ family learning/ parents programme	<b>William Parker School</b> Parkstone Road Hastings East Sussex TN34 2NT	£16,140 changed to £15,618.50
(27) Children's Activities	<b>Ore Valley CYP (v)</b> c/o Priory Neighbourhood Centre 361 Priory Road Hastings TN34 3NW	£24,500
Parenting	<b>Ore Valley CYP (v)</b> c/o Priory Neighbourhood Centre 361 Priory Road Hastings TN34 3N	£5,400
Admin Worker	<b>Education Action Zone</b> Marshall Tufflex Building 1 Theaklen Drive St Leonards -on-Sea	£4,570
1 to 1 support	<b>Education Action Zone</b> Marshall Tufflex Building 1 Theaklen Drive St Leonards -on-Sea	£14,200 <b>Allocated</b> <b>£14,200</b>

<b>Newhaven</b>		
( 38) Linkworkers + ( 42) Sports activities/Early Evening Young + Admin	<b>Newhaven Community Development Association (v)</b> NCDA Hillcrest Centre Hillcrest Road Newhaven BN9 9EA	£63,930  £1,500
( 36) (NIPPERS) Holiday activities	<b>NCDA (v)</b> Shakespeare Hall Fort Road Newhaven BN9 9DL	£5,490 £31,650
Holiday activities	<b>Newhaven Community Development Association (v)</b> NCDA	£4,620 <b>Allocated</b>

	Hillcrest Centre Hillcrest Road Newhaven BN9 9EA	£4,620
Parent Support		£5,000
		<b>Allocated</b>
		£10,000

<b>Rural</b>		
Holiday Playscheme and After School Club	<b>Lewes and District YMCA (v)</b> Westgate Street Lewes East Sussex BN7 1YR	£1,900 + £1,025 Allocated £2,925
OASTies Music	<i>Uplands Youth and Community Centre (v)</i> Lower High Street Wadhurst East Sussex TN5 6AX	£1950
Flavours Fruit Club	<b>South Malling CE Primary School</b> Church Lane Lewes BN7 2HS	£1,627
( 41) COPES	<b>Rural Development Work (v)</b> Sussex House 212 High Street Lewes East Sussex BN7 2NH	£136,620

<b>Y.O.T Funding</b>		
Social Inclusion	<b>Bexhill High School</b> Bexhill High School Down Road Bexhill-on-Sea TN39 4HT	£33,000 <b>Allocated</b>
(02) Link Workers	<b>Education Action Zone Marshall Tufflex Building</b> 1 Theaklen Drive St Leonards-on-Sea	£141,000 <b>Allocated</b>
Hastings Community Nurse	Y.O.T	£9,000 <b>Allocated</b>
Childs Play Project	<b>Cradle Hill Community Association (v)</b> 79 Lexden Drive Seaford BN25 3JF	£3,000 £4,044.95 <b>Allocated</b> £4,044.95
Uckfield 11-13 Diversion Project	Downsview Crescent Uckfield TN22 1UB	£5,000 <b>Allocated</b> £5,000
Inclusion	<b>N.C.D.A (v)</b>	£10,075 <b>Allocated</b> £10,075

Youth Support Linkworkers	<b>Youth Offending Team</b>	£50,000 <b><u>Allocated</u></b> £33,260
Young Victims of Crime. Chrysalis project	<b>Youth Offending Team</b>	£8,000 <b><u>Allocated</u></b> £8,000
Parent Family Support		£10,000
Out of school activities	<b>P.A.Y.P</b> East Sussex Youth Development Service c/o EAVS 6-8 Saffrons Road Eastbourne BN22 7QK  Mailing address:- The Charles Jewell Centre 56-58 Seaside Eastbourne BN22 7QK	£35,000 <b><u>Allocated</u></b> £35,000
Early Intervention 5-13	Hailsham Community College Battle Road Hailsham BN27 1DT	£6,400 <b><u>Allocated</u></b> £6,400

Appendix 10



---

**Future Plus Limited**  
**14 Darfield, Bayham Street, London NW1 0BN**  
**Telephone: 020 7209 2521**

**East Sussex Children's Fund**

**Proposal for Supporting the Development of  
Participation**

**Future Plus Ltd**  
**August 2004**

---

## **1.**

### **1.1 KEYS POINTS IN THE SPECIFICATION**

#### **Experience of Participation**

Future Plus Ltd works with organisations who see the participation of their communities as central to their on going development and success. We are committed to the following core principles in respect of participation;

- A visible commitment to participation, underpinned by resources for capacity building.
- Participation is valued.
- All people have an equal opportunity to become involved.
- Policies and standards for participation are established, evaluated and continuously improved.

We have worked with children, young people and adults across a range of service areas. Methods we have employed include one to one discussions, focus groups and group work and the use of creative arts and games. More detail on the projects we have undertaken is outlined in section 1.3.

#### **Carrying out the work**

We will establish liaison with key contacts in the six partnership areas and the East Sussex Children's Fund in order to closely assess the outputs desired from the area workshops. We will agree a target audience for each of the local workshops and will employ a creative approach to mailing information on these to the key audiences, carry out extensive telephone and e-mail marketing and agree a local plan to engage partnership networks in maximising interest and attendance.

The workshops will be the starting point for the development of participation action plans and Future Plus will provide additional support to Partnerships as they develop these plans.

A toolkit will be designed for use with future providers. This will encompass best practice in the field and it will build upon the learning gained through the work undertaken in the six localities and the requirements articulated by participants, East Sussex Children's Fund and the views expressed to the Partnership by children and young people.

#### **Supporting the Involvement of Children & Young People**

We believe that it is important that children and young people have a separate space for expressing their views and that these should then be fed in to the 6 local workshops. We understand that the East Sussex Children's Fund will be engaging with children and young people and the outputs from this work will be fed into the six sessions.

## 1.2 ABOUT THE BRIEF

The consultants understand that the East Sussex Children's Fund is seeking a proposal to deliver the following:

- Develop workshops in 6 areas of the Children's Fund and contact relevant individuals to encourage their attendance.
  1. Use these workshops to support providers and partnership members to develop their understanding of Participation
  2. Support providers and partnership members to develop their own action plans
- Develop a toolkit, pack or guidance using good practice knowledge, for new providers and new partnership members to support the development of participation for the future.

## 2. THE PROPOSED APPROACH

### Phase 1

- **Establish liaison arrangements with the East Sussex Children's Fund Manager and agree final scope of work**
- **Establish contact with the six Partnership areas and elicit views on content of workshops**

*Milestones: Liaison arrangements and scope of work agreed; contact established with the six partnership areas and views elicited.*

### Phase 2

- **Production of Project Plan for the work for discussion and agreement with key stakeholders**

*Milestone: Production of project plan*

### Phase 3

- **Building on intelligence gathered in Phase 1, engage local Boards and providers to deliver an interactive workshop in each of the six Children Fund areas for providers and parents and young people on the principles and practice of participation. These will be organised in such a way as to fully engage service users and reflect their views and aspirations. In designing these the consultants would ensure that the eight issues of Participation outlined in the Invitation to tender document are addressed.**

*Milestone: Delivery of six workshops developing participants understanding of participation.*

#### Phase 4

- **Building on the outputs of the workshops and in discussion with key local stakeholders, support providers and partnership members in developing their own action plans. To a certain extent these will contain common goals and targets for future monitoring and evaluation, but will also be reflective of local circumstances. They will also take on board the culture and environmental changes which are key to a the optimum participation of parents and young people.**

*Milestone: Action plans drafted for each area.*

#### Phase 5

- **Development of a bespoke guide to good practice in participation work for new providers and new partnership members in East Sussex. This will draw upon the work undertaken in the different localities and good practice from elsewhere in the country. It will be a comprehensive guide and will address all the particular needs arising from the earlier stages of work. It will provide the basis for quality standards attached to funding.**

*Milestone: Guide to good practice produced.*