

Report to	Cabinet
Date	10 March 2009
Report By	Director of Transport and Environment
Title of Report	County Council Responsibilities for Areas of Outstanding Natural Beauty
Purpose of Report	To ensure the County Council fulfils its statutory duties to have regard to the conservation and enhancement of Areas of Outstanding Natural Beauty.

RECOMMENDATIONS: Cabinet is recommended to:

- 1. adopt the High Weald Management Plan review 2009;**
 - 2. endorse the South Downs Management Plan 2008;**
 - 3. agree the framework (Appendix 2) which outlines the County Council's duties to have regard to the conservation and enhancement of Areas of Outstanding Natural Beauty in exercising or performing any functions ;**
 - 4. agree to monitor and publish achievement against this framework, seeking the views of High Weald Joint Advisory Committee, the South Downs Joint Committee and Natural England on how the Council might improve; and**
 - 5. agree that an update be provided on an annual basis on the actions to achieve the conservation of Areas of Outstanding Natural Beauty.**
-
-

1. Financial Appraisal

1.1 There would be no additional costs resulting from the adoption of the High Weald Management Plan or the endorsement of the South Downs Management Plan.

1.2 There would be no direct costs, other than the officer time, in the consideration of issues raised in the Framework for Delivery of the County Council's AONB duties, as outlined in Paragraph 3 below. There could be cost implications in future years if the identification of required actions has cost consequences.

2. Supporting Information**2.1 Statutory Duties**

2.1.1 The County Council has a statutory duty to ensure the preparation and publication of Management Plans for those parts of the Sussex Downs and the High Weald Areas of Outstanding Natural Beauty that lie within our area (Countryside and Rights of Way [CROW] Act 2000, section 89). The County Council discharges this duty through the South Downs Joint Committee (SDJC) and the High Weald Joint Advisory Committee (JAC). The funding awarded annually to these bodies enable them to prepare, and adopt on our behalf, joint management plans for the whole of the South Downs (two Areas of Outstanding Natural Beauty, [AONBs]); and the High Weald.

2.1.2 The County Council also has a statutory duty, alongside other public bodies, to take into account the conservation of AONBs: *"in exercising or performing any functions in relation to, or so as to affect land...(the County Council) shall have regard to the purposes of AONBs", and these purposes are to "conserve and enhance the natural beauty of their area"*. (section 85, CROW Act).

2.2 High Weald Management Plan

The High Weald AONB JAC has prepared a revised management plan, on behalf of the local authorities of the AONB area. The consultation process for the revised High Weald AONB Management Plan has now been completed and the plan is ready for adoption by the local authorities in the AONB area. The revised plan was approved by the High Weald JAC on 20 October 2008. A letter from The High Weald JAC and supporting technical notes are attached at Appendix 1. A copy of the High Weald Management Plan 2008, is in the Members' Room and available on the internet at www.highweald.org

2.3 South Downs Management Plan

The management plan for the South Downs was adopted by the SDJC on 19 October 2007. The SDJC has asked that, along with the other local authorities in the AONB area, East Sussex County Council endorses the plan. A copy of the South Downs Management Plan 2007, is in the Members' Room and available on the internet at www.southdownsonline.org. An Action Plan is in preparation by the SDJC, that will set out the actions being undertaken by various organisations to implement the management plan.

3. Framework for Delivery of County Council's AONB duties

3.1 To ensure that the County Council as a whole implements its statutory duty to have regard to the AONBs, a draft framework has been developed with advice from officers of the High Weald JAC and the SDJC, attached at Appendix 2. Guidance for local authorities on the implementation of the CROW Act advises that the performance of councils on their duties will be judged by the AONB bodies and (now) Natural England. The proposed draft framework identifies actions for continuing work and from projects programmed to be implemented in the forthcoming year. The final framework and actions arising from it will be reviewed during the coming financial year and a final version produced for review in March 2010. Progress against this framework will be monitored annually and offered as evidence of our achievement against the AONB duties and in support of the Comprehensive Area Assessment (which includes a Key Line Of Enquiry on the use of natural resources). A map of the boundaries of the AONB areas in relation to the County boundary is provided at Appendix 3.

4. Conclusion and Reason for Recommendation

4.1 The County Council needs to demonstrate that it meets its duties to have regard to the conservation and enhancement of Areas of Outstanding Natural Beauty (AONB). The framework at Appendix 2 will provide a checklist to enable this to take place.

RUPERT CLUBB
Director of Transport and Environment
02 MARCH 2009
CABINET: C

Contact Officer: Virginia Pullan Tel. No. 01273 482639
Local member:

BACKGROUND DOCUMENTS

High Weald Management Plan Review, *High Weald AONB Unit*, October 2008

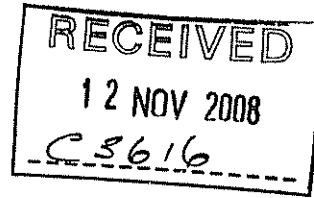
South Downs Management Plan, *South Downs Joint Committee*, April 2008.

Duties on relevant authorities to have regard to the purposes of National Parks, Areas of Outstanding Natural Beauty (AONBs) and the Norfolk and Suffolk Broads, *DEFRA*, 2005

High Weald AONB Joint Advisory Committee

Clerk to the Joint Advisory Committee
Chief Executive's Department
County Hall
St Annes Crescent
Lewes
East Sussex BN7 1SW

Copied to Rupert



Working together to care for a nationally valued landscape

Mrs Cheryl Miller
East Sussex County Council
County Hall
Lewes
East Sussex BN7 1UE

Date 7th November 2008
cc JAC member
OSG Officer

Dear Mrs Miller

The High Weald AONB Management Plan: Procedure for adoption prior to March 2009

The 'High Weald AONB Management Plan: A 20 year strategy' was adopted by your council in March 2004 in accordance with the requirements of the Countryside and Rights of way Act 2000. Under this Act, AONB Management plans are due for review every 5 years with the deadline for the review of the current Plan being March 2009.

I am writing to advise you that the consultation process for the revised High Weald AONB Management Plan has now been completed and the Plan is ready for adoption by your Council.

Consultation and review of the AONB Management Plan has been undertaken by the High Weald Joint Advisory Committee (JAC) on behalf of all 15 local authorities who have land within the AONB. As you will see from the attached notes the review has included full consultation, stakeholder involvement, a strategic environmental assessment, and the active involvement of members and officers from all local authorities within the AONB. The revised Plan was approved by the High Weald JAC on 20th October 2008.

Adopting this revised Plan will allow your Council to meet its statutory requirements under the Countryside And Rights of Way Act (2000): Section 89 to prepare and publish a Management Plan for the AONB. Following adoption by the relevant local authorities the JAC will undertake to publish the Plan on behalf of partners prior to the required deadline of 31st March 2009.

The AONB Management Plan 2004 has been instrumental in securing continuing conservation and management of this special area, one of England's finest landscapes. I have no hesitation in recommending the revised Plan to you and look forward to receiving notice of your adoption of the Plan. If you require any further clarification of the Plan review process please contact the AONB Policy Manager, Andrew Shaw on 01580 879955 a.shaw@highweald.org.

Yours Sincerely

Councillor Mrs Sylvia Tidy, Chairman
High Weald Joint Advisory Committee

Andrew Shaw

High Weald AONB Management Plan review

Technical Notes

- The Countryside and Rights of Way (CRoW) Act 2000 places a statutory responsibility on local authorities to produce and review a management plan for their area (section 89).
- This responsibility has been delegated by the local authorities to the High Weald AONB Unit under a Memorandum of Agreement (MOA), overseen by the High Weald AONB Joint Advisory Committee. (JAC).
- The JAC membership includes both member level and officer level representatives from all local authorities within the High Weald AONB.
- The High Weald AONB Management Plan 2004 was adopted by all local authorities in the High Weald in March 2004.
- In November 2007 the High Weald JAC authorised a review of the 2004 plan in accordance with the requirements under the CRoW Act for quinquennial reviews of management plans.
- The results of this review were reported to the February 2008 JAC which agreed that it was expedient to amend the plan in light of the review.
- The JAC authorised a limited 'maintenance' revision of the plan to update the plan to current circumstances and to revise the Indicators and Targets, as opposed to a major revision or change.
- A public consultation draft of the revised plan was prepared and approved by the JAC Management Board in June 2008. This draft constituted the 'report of amendments' required by Section 89 of the CRoW Act.
- A stakeholder and limited public consultation exercise (commensurate with the limited scale and scope of the review) was held between July and September 7th 2008. Results of this consultation are available in the Consultation Report on the website. (www.highweald.org)
- A final revised version of the plan was presented to, and approved by, the JAC at its meeting on the 20th October. The Chairman was formally required to write to local authorities requesting that they formally adopt the plan.
- Natural England (previously the Countryside Agency) oversee the management plan review process and have formally approved the final draft version of the reviewed plan.
- The Plan is the local authorities plan, not the AONB Unit or JAC's plan. It is adopted by and for the local authorities as their policy for the area.
- The Plan contributes to the Local Authorities powers under Section 84 of CRoW Act to take all necessary action to conserve and enhance the AONB, and also assists in discharging their duty to 'have regard to the purpose of designation' (to conserve and enhance the AONB) under Section 85 of the CRoW Act.
- It is considered that the scope and method of the review including appropriate public consultation and sustainability appraisal, meet the requirements under Planning Policy Statement (PPS) 12 Local Spatial Planning, para 6.3:
However, if the same disciplines of consultation and sustainability appraisal (where necessary) are applied, such information might, subject to the circumstances of a particular case, be afforded a weight commensurate with that of SPDs in decision making. This may be more likely if the district/borough/city councils to which it is intended to apply endorse the guidance.
- The plan review has been supported by a Strategic Environmental Assessment (SEA) process and is accompanied by a Scoping Report and Environmental Statement, meeting the requirements of the European Directive 2001/42EC.
- The plan review has been supported by an Appropriate Assessment scoping level report and process under Regulation 48 of the Conservation (Natural Habitats) Regulations 1994 (EU Directive 92/43/EEC Habitats Directive).
- The revised plan is still titled the 'High Weald AONB Management Plan 2004'. This plan is a 20 year strategy and remains so. This is a revision and updating of that 20 year vision and is still the same plan. This revised version of the plan will be subtitled as the '2009 Edition' with a note that it was reviewed and revised, and adopted in March 2009.

APPENDIX 2

DRAFT Framework outlining the County Council's duties to have regard to the conservation and enhancement of the Areas of Outstanding Natural Beauty

Introduction

To ensure that the County Council as a whole implements its statutory duty to have regard to the AONBs, this framework has been developed with advice from officers of the High Weald AONB Unit and the South Downs Joint Committee. Guidance for local authorities on the implementation of the CROW Act advises that the performance of councils on their duties will be judged by the AONB bodies and (now) Natural England. Our framework identifies actions from continuing work and from projects programmed to be implemented in the forthcoming year. Progress against this framework will be monitored annually and offered as evidence of our achievement against the AONB duties and in support of Comprehensive Area Assessment (which includes a Key Line Of Enquiry on the use of natural resources). A map of the boundaries of the AONB areas in relation to the County boundary is attached. The County Council has a statutory duty, alongside other public bodies, to take into account the conservation of AONBs: *"in exercising or performing any functions in relation to, or so as to affect land...(the County Council) shall have regard to the purposes of AONBs", and these purposes are to "conserve and enhance the natural beauty of their area"*. (section 85, CROW Act).

The actions outlined below are not intended to represent a list of priority actions for activities in the AONBs over and above the parts of the County outside the AONBs. The purpose is to identify County Council activities which may have an impact on the AONB areas and outline how these may contribute to the duty to have regard to conservation and enhancement.

This is a **draft document** to be reviewed during the coming year in agreement with all County Council departments. The aim is to identify where processes are in place which do deliver our duties and identify where process improvements may be necessary to anticipate the requirement. This will also be a tool to demonstrate that we are addressing these duties.

Action Plan

Department Teams	County Council Responsibilities	Suggested actions to ensure that implementation of projects will conserve and enhance the natural beauty of the AONB areas.	Suggested Actions in High Weald AONB areas 09/10. NOTE: THESE ARE EXAMPLES FOR FURTHER DISCUSSION	Actions in South Downs Joint Committee areas 09/10 NOTE: THESE ARE EXAMPLES FOR FURTHER DISCUSSION
Community Planning Chief Executives				
	Induct and support Members	Include mention of AONB duties in the induction planning process.	Induction process to start after June 09.	Induction process to start after June 09
	Consider the implications for the potential impacts on AONBs in reconciling policy and resources.	Consider the potential impacts in AONB areas of reconciling policy and resources.		
	Consider the implications for the potential impacts on AONBs in developing the corporate service plan	In reviewing the service plan consider potential impacts in AONB areas.		
	Traveller sites	Improve and Manage traveller sites which are the County Council's responsibility in order to protect and enhance the local landscape and environment.		
Corporate Property				
	Application of the Sustainable Buildings Policy to New developments and Maintenance of the	Consider the implications of its application in AONBs. Continue to raise awareness of this policy for County Council buildings and hard landscaping.		

Department Teams	County Council Responsibilities	Suggested actions to ensure that implementation of projects will conserve and enhance the natural beauty of the AONB areas.	Suggested Actions in High Weald AONB areas 09/10. NOTE: THESE ARE EXAMPLES FOR FURTHER DISCUSSION	Actions in South Downs Joint Committee areas 09/10 NOTE: THESE ARE EXAMPLES FOR FURTHER DISCUSSION
	existing estate.			
	Disposal of land.	Prior to disposing of land owned by ESCC in the AONBs, consider implications of potential future land use.	<i>No disposals programmed.</i>	<i>No disposals programmed.</i>
	Heating of Buildings.	Apply existing policy to consider wood fuel heating of estate. In doing so identify the woodlands in the AONB areas which are actively producing wood for and promote this as the source for County Council wood fuel burners.	<i>Monitor the progress on implementation of wood fuel burners in County Council buildings and the source of fuel. e.g. Ringmer CC/ Bexhill HS</i>	<i>Monitor the progress on implementation of wood fuel burners in County Council buildings and source of fuel. E.g. Potential burner at Exceat.</i>
Children's Services				
	Development strategies and development briefs	Consider design standards for all County Council developments in the context of an AONB location. Refer to local design guides where available as Supplementary Planning Documents or otherwise.		
	Management of buildings	Consider design standards for all County Council developments in the context of an AONB location Refer to local design guides where available as Supplementary Planning Documents or otherwise.		
	Management of the estate	Manage the estate and encourage schools to manage their grounds to conserve and enhance	<i>For example: Ongoing tree surveys on</i>	<i>For example: Ongoing tree surveys on</i>

Department Teams	County Council Responsibilities	Suggested actions to ensure that implementation of projects will conserve and enhance the natural beauty of the AONB areas.	Suggested Actions in High Weald AONB areas 09/10. NOTE: THESE ARE EXAMPLES FOR FURTHER DISCUSSION	Actions in South Downs Joint Committee areas 09/10 NOTE: THESE ARE EXAMPLES FOR FURTHER DISCUSSION
		the AONB landscape. Make individual schools aware of Landscape and other specialist environmental advice available in the Environmental Advice Team.	<i>school sites which will identify landscape amenity value and suggested management advice.</i>	<i>school sites which will identify landscape amenity value and suggested management advice.</i>
Adult Social Care				
	Development strategies and development briefs	Consider design standards for all County Council developments in the context of an AONB location. Refer to local design guides where available as Supplementary Planning Documents or otherwise.		
	Management of buildings	Consider design standards for all County Council developments in the context of an AONB location Refer to local design guides where available as Supplementary Planning Documents or otherwise.		
	Management of the estate	Manage the estate and to conserve and enhance the AONB landscape. Make individual facilities aware of Landscape and other specialist environmental advice available in the Environmental Advice Team.		
Libraries	Development strategies and development briefs	Consider design standards for all County Council developments in the context of an AONB location. Refer to local design guides where available as Supplementary Planning		

Department Teams	County Council Responsibilities	Suggested actions to ensure that implementation of projects will conserve and enhance the natural beauty of the AONB areas.	Suggested Actions in High Weald AONB areas 09/10. NOTE: THESE ARE EXAMPLES FOR FURTHER DISCUSSION	Actions in South Downs Joint Committee areas 09/10 NOTE: THESE ARE EXAMPLES FOR FURTHER DISCUSSION
		Documents or otherwise.		
	Management of buildings	Consider design standards for all County Council developments in the context of an AONB location Refer to local design guides where available as Supplementary Planning Documents or otherwise.		
	Management of the estate	Manage the estate and to conserve and enhance the AONB landscape. Make individual facilities aware of Landscape and other specialist environmental advice available in the Environmental Advice Team.		
Transport and Environment				
<i>Transport Strategy and Road Safety</i>				
Road Safety Engineering	Implement priority safety schemes in towns, villages and rural lanes in the AONB areas. To reduce speed, encourage sustainable transport, reduce traffic impacts and improve air quality.	Establish a process of consultation with the Environmental Advice Team for schemes within the AONB to ensure conservation and enhancement of landscape, biodiversity and cultural heritage.	<i>For example: Boreham Street traffic calming Village speed limits Starrs Green / Telham, Catsfield Stream, Beckley / 4 Oaks and Nether field. Wadhurst, new crossing B2203 Maynards Green traffic management. A267 Five Ashes speed</i>	<i>For Example: Kingston Village traffic calming measures will be constructed in 09/10.</i>

Department Teams	County Council Responsibilities	Suggested actions to ensure that implementation of projects will conserve and enhance the natural beauty of the AONB areas.	Suggested Actions in High Weald AONB areas 09/10. NOTE: THESE ARE EXAMPLES FOR FURTHER DISCUSSION	Actions in South Downs Joint Committee areas 09/10 NOTE: THESE ARE EXAMPLES FOR FURTHER DISCUSSION
			<i>limit B2102 Blackboys speed limit A271/B2204 Hazards Green</i>	
	Promote and Provide Safe Routes to Schools in the AONB areas.	Establish a process of consultation with the Environmental Advice Team for schemes within the AONB to ensure conservation and enhancement of landscape, biodiversity and cultural heritage.	<i>List projects likely to be considered in 09/10</i>	<i>List projects likely to be considered in 09/10</i>
Road Safety Education	Work with Schools in the AONB areas to Produce Travel Plans.	Target schools which do not have up to date travel plans.	<i>List projects likely to be considered in 09/10</i>	<i>List projects likely to be considered in 09/10</i>
Transport Strategy	Deliver 2006-2011 LTP targets including LATS (Local Area Transport schemes) in the AONB areas.	Establish a process of consultation with the Environmental Advice Team for schemes within the AONB to ensure conservation and enhancement of landscape, biodiversity and cultural heritage.	<i>For Example: Heathfield A267/265 right turn lane Heathfield High Street Phase 6 Powdermill Lane Battle, mini roundabout</i>	
	Promote delivery of the National Cycle Network (NCN) and cycling in general in the AONB areas.	Establish a process of consultation with the Environmental Advice Team for schemes within the AONB to ensure conservation and enhancement of landscape, biodiversity and cultural heritage.	<i>List developments likely to be considered in 09/10</i>	<i>List developments likely to be considered in 09/10</i>
Highway Design	Design of highway schemes.	Establish a process of consultation with the Environmental Advice Team		

Department Teams	County Council Responsibilities	Suggested actions to ensure that implementation of projects will conserve and enhance the natural beauty of the AONB areas.	Suggested Actions in High Weald AONB areas 09/10. NOTE: THESE ARE EXAMPLES FOR FURTHER DISCUSSION	Actions in South Downs Joint Committee areas 09/10 NOTE: THESE ARE EXAMPLES FOR FURTHER DISCUSSION
		for schemes within the AONB to ensure conservation and enhancement of landscape, biodiversity and cultural heritage.		
Highway Operations				
	Network Maintenance	Establish a process of consultation with the Environmental Advice Team for schemes within the AONB to ensure conservation and enhancement of landscape, biodiversity and cultural heritage.	<i>List projects likely to be considered in 09/10</i>	<i>List projectss likely to be considered in 09/10</i>
	Management of the Highway Estate	Establish a process of consultation with the Environmental Advice Team for schemes within the AONB to ensure conservation and enhancement of landscape, biodiversity and cultural heritage.	<i>List projects likely to be considered in 09/10</i>	<i>List projectss likely to be considered in 09/10</i>
Transport Operations				
Passenger Transport	Promote and support passenger and community transport initiatives.	Establish a process of consultation with the Environmental Advice Team for schemes within the AONB to ensure conservation and enhancement of landscape,	<i>List projects likely to be considered in 09/10</i>	<i>List projectss likely to be considered in 09/10</i>

Department Teams	County Council Responsibilities	Suggested actions to ensure that implementation of projects will conserve and enhance the natural beauty of the AONB areas.	Suggested Actions in High Weald AONB areas 09/10. NOTE: THESE ARE EXAMPLES FOR FURTHER DISCUSSION	Actions in South Downs Joint Committee areas 09/10 NOTE: THESE ARE EXAMPLES FOR FURTHER DISCUSSION
		biodiversity and cultural heritage.		
Parking	Parking schemes	Establish a process of consultation with the Environmental Advice Team for schemes within the AONB to ensure conservation and enhancement of landscape, biodiversity and cultural heritage.	<i>List projects likely to be considered in 09/10</i>	<i>List projects likely to be considered in 09/10</i>
Street Lighting and Traffic Signals	Street lighting and traffic signals, design of new schemes and maintenance of existing.	Establish a process of consultation with the Environmental Advice Team for schemes within the AONB to ensure conservation and enhancement of landscape, biodiversity and cultural heritage.		
Environmental Operations				
Rights of Way	Deliver the Rights of Way Improvement Packages (RoWIP).	AONB priority networks included in RoWIPs		
	Carry out specific Ro W improvement in the AONBs	Establish a process of consultation with the Environmental Advice Team for schemes within the AONB to ensure conservation and enhancement of landscape, biodiversity and cultural heritage.	<i>Examples: Provisional Implement Battle Ramp footpath scheme.</i>	
	Inform residents about the work of Rights of Way and Countryside Management.	Continue to produce the Meresman including articles and activities in the AONBs	<i>Two editions during 2009/10</i>	<i>Two editions during 2009/10</i>
	Engage residents in	Continue to produce the Exploring	<i>Two editions for Spring/</i>	<i>Two editions for Spring /</i>

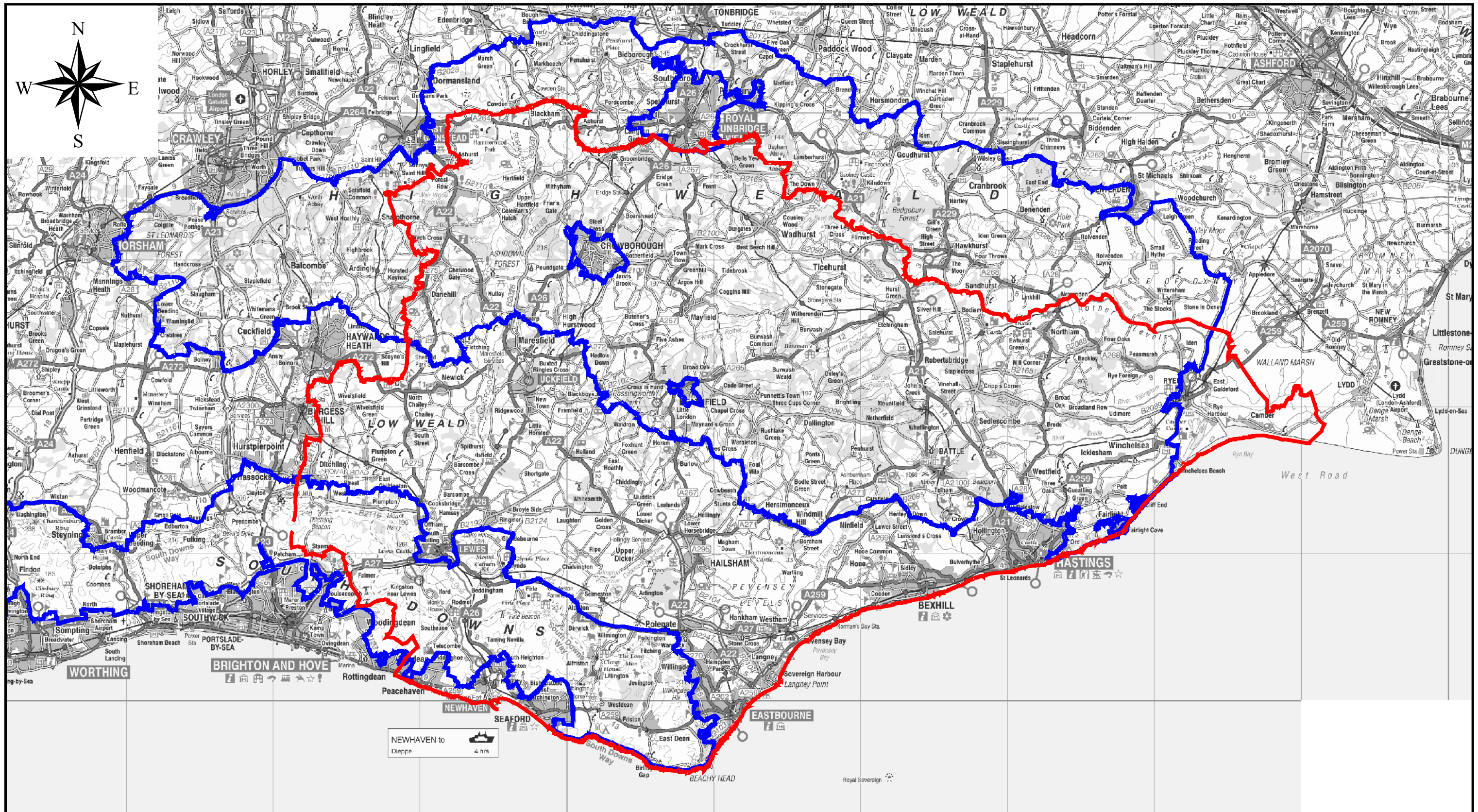
Department Teams	County Council Responsibilities	Suggested actions to ensure that implementation of projects will conserve and enhance the natural beauty of the AONB areas.	Suggested Actions in High Weald AONB areas 09/10. NOTE: THESE ARE EXAMPLES FOR FURTHER DISCUSSION	Actions in South Downs Joint Committee areas 09/10 NOTE: THESE ARE EXAMPLES FOR FURTHER DISCUSSION
	enjoyment and appreciation of the countryside.	Sussex Guided Walks Programme, including walks in the AONBs	<i>Summer and Autumn / Winter</i>	<i>Summer and Autumn / Winter</i>
Countryside Management	Manage countryside sites.	Deliver countryside management projects in the AONB	<i>Ongoing Management of Weir Wood Reservoir, Forest Way and Cuckoo Trail</i>	
Weald Forest Ridge Partnership	Train and develop Volunteer rangers.	Support the Weald Forest Ridge Partnership.	Pathways to Natural Heritage Project at Weir Wood	
	Historic Environmental Awareness	Support the bid to English Heritage for match funding.	Await outcome of bid	
	ESAMP	Deliver heritage activities and events.	<i>List events</i>	
	High Weald Historic farmsteads.	Support English Heritage in Developing a project to manage change and to feed in to the Development control process.	Monitor progress	
Waste Operations	Manage and Monitor restored landfill sites in AONB areas.	Establish a process of consultation with the Environmental Advice Team for schemes within the AONB to ensure conservation and enhancement of landscape, biodiversity and cultural heritage.	<i>For Example: Manage sites in County Council ownership for enhanced biodiversity, visual amenity and landscape value i.e. Skull Wood, Hadlow Down and Mountfield.</i>	
	Manage Household waste sites in AONB areas	Manage to protect local amenity, prevent litter and screen site activities from neighbouring areas.		
	Environmental crime enforcement	Prevent and clear up fly tipping and prosecute offenders.	<i>Appoint enforcement officers.</i>	<i>Appoint enforcement officers.</i>

Department Teams	County Council Responsibilities	Suggested actions to ensure that implementation of projects will conserve and enhance the natural beauty of the AONB areas.	Suggested Actions in High Weald AONB areas 09/10. NOTE: THESE ARE EXAMPLES FOR FURTHER DISCUSSION	Actions in South Downs Joint Committee areas 09/10 NOTE: THESE ARE EXAMPLES FOR FURTHER DISCUSSION
Planning				
Planning Development Control	Determine County Matter and County Council applications	Have regard to AONB policy in consideration of planning applications for waste and minerals applications and County Council developments	<i>List developments likely to be considered in 09/10</i>	<i>List developments likely to be considered in 09/10</i>
Transport Development Control	Provide highway authority advice in consideration of planning applications.	Have regard to AONB policy in responding to local planning authorities	<i>List developments likely to be considered in 09/10</i>	<i>List developments likely to be considered in 09/10</i>
	Provide Highway Authority advice as input to Local Development Frameworks	Have regard to AONB policy in the advice given on the development and implementation of the Framework	<i>List developments likely to be considered in 09/10</i>	<i>List developments likely to be considered in 09/10</i>
Strategic Planning Policy	Provide advice into the formulation of, and the County Council's formal responses to, consultations on national, regional and sub regional planning strategies and policies	Have regard to AONB policy in the advice and responses given on national, regional and sub regional consultations.		
	Lead and co-ordinate County Council advice and formal response on district and borough councils' LDFs	Have regard to AONB policy in the advice and responses given on LDFs prepared by district and borough councils.	<i>List developments likely to be considered in 09/10</i>	<i>List developments likely to be considered in 09/10</i>
	Provide strategic planning advice in	Have regard to AONB policy in responding to local planning		

Department Teams	County Council Responsibilities	Suggested actions to ensure that implementation of projects will conserve and enhance the natural beauty of the AONB areas.	Suggested Actions in High Weald AONB areas 09/10. NOTE: THESE ARE EXAMPLES FOR FURTHER DISCUSSION	Actions in South Downs Joint Committee areas 09/10 NOTE: THESE ARE EXAMPLES FOR FURTHER DISCUSSION
	consideration of planning applications and responses to consultations on strategic applications.	authorities.		
Waste and Minerals Planning Policy	Waste and Minerals Development Framework	Have regard to AONB policy in the development and implementation of the Framework.		
Environment and Waste				
Environmental Advice	County Landscape Assessment	Ensure that this is kept up to date on the County Council website, in accordance with the latest Natural England Guidance	Update to latest guidance and monitor influences on landscape character. Include the topic paper on Remoteness	Update to latest guidance and monitor influences on landscape character. Include the topic paper on Remoteness
	Strategic Open Spaces Strategy	Complete the report and identify priority actions from it.	<i>Report on implications for HWAONB</i>	<i>Report on implications for South Downs AONB</i>
	Provide specialist advice on archaeology, ecology, landscape architecture, urban design, noise and air quality. To inform the development of Local Development Frameworks and Supplementary Planning Documents.	Have regard to our duties towards and the specific policies covering AONBs.	<i>Report on consultations which could have an impact on the AONB areas.</i>	<i>Report on consultations which could have an impact on the AONB areas.</i>
	Provide specialist advice on archaeology, ecology landscape architecture,	Have regard to our duties towards and the specific policies covering AONBs.	<i>Report on contributions to sites within or which would impact on the AONB</i>	<i>Report on contributions to sites within or which would impact on the AONB areas.</i>

Department Teams	County Council Responsibilities	Suggested actions to ensure that implementation of projects will conserve and enhance the natural beauty of the AONB areas.	Suggested Actions in High Weald AONB areas 09/10. NOTE: THESE ARE EXAMPLES FOR FURTHER DISCUSSION	Actions in South Downs Joint Committee areas 09/10 NOTE: THESE ARE EXAMPLES FOR FURTHER DISCUSSION
	urban design, noise and air quality. To inform the delivery of Local Transport Plan targets, LATS and road safety schemes in AONB areas.	Contribute to case conferences on specific schemes.	<i>areas.</i>	
	Provide specialist advice on archaeology, ecology landscape architecture, urban design, noise and air quality. To inform the development of County Council planning policy.	Have regard to our duties towards and the specific policies covering AONBs. Contribute to sustainability appraisals and Strategic Environmental Assessment.	<i>For example : Contribute to the Waste and Minerals sustainability assessment.</i>	<i>For Example: Contribute to the Waste and Minerals sustainability assessment.</i>
	Respond to requests for comments on planning applications in AONBs.	Have regard to our duties towards and the specific policies covering AONBs.		
	Promote the biodiversity of coastal and marine habitats and their public appreciation.	Provide specialist assistance to enable the County Council to consider its response to coastal and marine issues.		<i>For example: Provide support to Cuckmere Estuary Partnership promoting a sustainable approach to coastal and flood risk management.</i>
	Environmental support services to encourage sustainable business	Provide environmental support and advice to businesses in the AONB areas on request.	Monitor contributions to sites in or which would impact on the AONB	Monitor contributions to sites in or which would impact on the AONB areas.

Department Teams	County Council Responsibilities	Suggested actions to ensure that implementation of projects will conserve and enhance the natural beauty of the AONB areas.	Suggested Actions in High Weald AONB areas 09/10. NOTE: THESE ARE EXAMPLES FOR FURTHER DISCUSSION	Actions in South Downs Joint Committee areas 09/10 NOTE: THESE ARE EXAMPLES FOR FURTHER DISCUSSION
	operations.		areas.	
	Advise on Public Realm issues	Develop a package of agreed standards using latest guidance e.g. Department for Transport Guidance including Manual for Streets and other current Public Realm strategies.		
Environmental Action	Promote and encourage recycling	Deliver Rethink Rubbish programme of events Compost Doctor Service WREP (Waste resources evidence programme) waste awareness and climate change education. Community Waste Action Grants.	<i>Activities proposed for 09/10</i>	<i>Activities proposed for 09/10</i>
	Develop and deliver a Climate Change Strategy.	Consider the landscape and visual benefits of implementation of the Climate Change Strategy. Embed climate change strategy in AONB management plan action plans.	<i>Seek the views of the High Weald Unit on County Council Climate Change implementation plan.</i>	<i>Seek the views of the SDJC on County Council Climate Change implementation plan.</i>
	Develop an Environmental Strategy	Consider the landscape and visual benefits of implementation of an Environmental Strategy. Embed the environmental strategy in AONB management plan action plans.	<i>Insert programme for this in 09/10</i>	<i>Insert programme for this in 09/10</i>
Joint Waste Contract	Manage joint waste contract with Brighton and Hove	Consider the impacts of the joint waste contract on the conservation and enhancement of the AONBs		<i>For Example: Closure and reinstatement of Beddingham Landfill site</i>



East Sussex County Council

Rupert Clubb
 BEng (Hons) CEng MICE
 Director of Transport and Environment,
 Lewes.

AONB Boundaries (Blue)

County Boundary (Red)

Reproduced from the Ordnance Survey Mapping with the permission of the Controller of H.M. Stationery Office. Crown Copyright. Unauthorised reproduction infringes Crown Copyright and may lead to prosecution or civil proceedings.
 East Sussex County Council - LA 076600 2009

Scale : 1:250000

Date : 29 January 2009

Drg. No : AONB

Drawn : JN