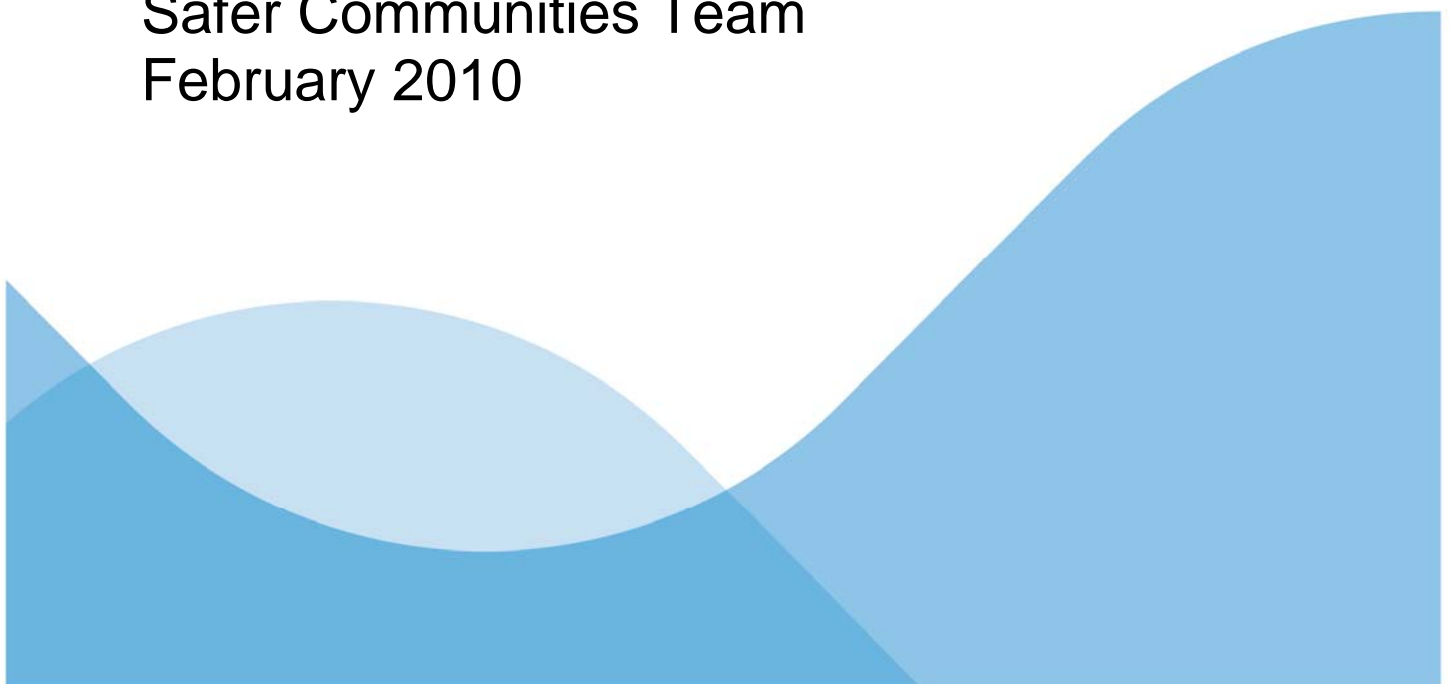




Community Safety in your area

July – October 2009

Report produced by:
Safer Communities Team
February 2010



Introduction

The East Sussex Safer Communities Partnership is made up of a variety of organisations and works together to make your community a safer place to live, work and visit.

During July to October 2009 we asked you to tell us what the priorities should be for keeping you safe in your local area, and throughout East Sussex. The questionnaire was available to complete online via a link on our website and paper copies were distributed across the county at a variety of public places and events.

In total we received 797 responses and the findings have helped the partnership to set its priorities for 2010 – 2011.

This report includes the top line results for the survey. For each question we have included a figure for the absolute number of people who responded, and also a percentage to the nearest whole number. Responses may not always add up to 100% because of the rounding and also because of the number of replies

This survey was re-launched in January 2010 so the partnership can gather view of residents throughout the year, and can explore whether people feel more or less safe over time.

If you would like to give us your views go to www.eastsussex.gov.uk/safetysurvey to complete the questionnaire.

Findings

Q0a Which town or village do you live in?

99% of respondents completed this question

Q0b What is your postcode?

98% of respondents completed this question

Your Local Area

We would like you to tell us what the priorities should be for keeping you safe in your local area, and throughout East Sussex. By 'your local area' we mean the area within 15-20 minutes walking distance from your home.

Q1 How safe or unsafe do you feel when outside in your local area?

	very safe	fairly safe	neither safe nor unsafe	fairly unsafe	very unsafe	don't know
After dark	109 14%	340 43%	115 14%	150 19%	69 9%	4 1%
During the day	406 51%	282 35%	53 7%	26 3%	10 1%	0 0%

Q2 Do you feel safer in your local area now than you felt...

	more safe	about the same	less safe	don't know	I wasn't a resident of East Sussex then
12 months ago	33 4%	581 73%	136 17%	10 1%	12 2%
5 years ago	65 8%	377 47%	195 25%	19 2%	93 12%
10 years ago	91 11%	226 28%	218 27%	29 4%	180 23%

Q3 Is there a particular area or street in a local town or village that makes you feel unsafe? If yes, please include details below.

We received 480 comments in response to this question. All the comments are being looked at and where possible, are being used by local Crime and Disorder Reduction Partnerships to improve areas and make you feel safer.

Q4 Thinking about your local area how much of a problem do you think each of the following are?

	a very big problem	a fairly big problem	not a very big problem	not a problem at all	No opinion
Noisy neighbours or loud parties	36 5%	87 11%	306 38%	337 42%	8 1%
Teenagers hanging around on the streets	120 15%	186 23%	291 37%	182 23%	3 0.4%
Rubbish or litter lying around	119 15%	213 27%	300 38%	135 17%	1 0.1%
Vandalism, graffiti and other deliberate damage to property or vehicles	74 9%	170 21%	323 41%	165 21%	3 0.4%
People using or dealing drugs	99 12%	121 15%	203 26%	281 35%	67 8%
People being drunk or rowdy in public places	136 17%	160 20%	253 32%	209 26%	15 2%
Abandoned or burnt out cars	19 2%	28 4%	212 27%	479 60%	37 5%

Q5 Please tell us which three of the following types of crime you think are the most important for us to tackle in your local area. Please rank them in order of their importance to you, where 1 is the most important, 2 the second most important and 3 the third most important. Even though you may feel that two or more of these issues are of equal importance please choose only three options and give them each a ranking of their own.

	most important	2nd most important	3rd most important
Anti -social behaviour	395 50%	141 18%	93 12%
Arson	22 3%	15 2%	43 5%
Burglary	103 13%	190 24%	127 16%
Car Crime	37 5%	126 16%	119 15%
Domestic violence	43 5%	47 6%	68 9%
Hate Crime	30 4%	35 4%	52 7%
Road Safety	146 18%	128 16%	128 16%
Mugging (Robbery)	43 5%	65 8%	84. 11%
Sexual violence	69 9%	30 4%	53 7%
Other	28 4%	21 3%	28 4%

Q6 Please tell us which three of the following types of anti-social behaviour you think are the most important for us to tackle in your local area. Please rank them in order of their importance to you, where 1 is the most important, 2 the second most important and 3 the third most important. Even though you may feel that two or more of these issues are of equal importance please choose only three options and give them each a ranking of their own.

	most important	2nd most important	3rd most important
Alcohol related anti-social behaviour	303 38%	127 16%	87 11%
Anti-social driving	152 19%	117 15%	86 11%
Anti-social parking	73 9%	72 9%	77 10%
Dog fouling	60 8%	74 9%	109 14%
Drinking on the street, in parks and other public places	51 6%	91 11%	77 10%
Nuisance neighbours	42 5%	65 8%	45 6%
Under-age drinking	51 6%	66 8%	85 11%
Vehicles without road tax	29 4%	29 4%	45 6%
Verbal abuse or intimidation by adults	42 5%	54 7%	57 7%
Verbal abuse or intimidation by groups of young people	125 16%	98 12%	107 13%
Other	24 3%	6 1%	14 2%

Q7 Which of these do you think is the main cause of anti-social behaviour?

1	262	33%	Poor parenting
2	146	18%	Availability of alcohol
3	132	17%	Lack of police or other uniformed people on the streets
4	83	10%	Lack of facilities for young people
5	56	7%	Lack of positive role models
6	32	4%	Drug taking
7	18	2%	Lack of employment opportunities
8	11	1%	Lack of education
9	10	1%	Don't know
10	5	1%	Television programmes
11	2	0%	Computer games
Something else? please provide details			80 10%

Q8 Would you say that there is less or more crime and anti-social behaviour in your local area than 12 months ago?

	less	about the same	more	don't know
Crime	75 9%	450 57%	119 15%	127 16%
Anti-social behaviour	52 7%	371 47%	276 35%	70 9%

Q9 Have any of the following influenced your feelings, either positively or negatively, about crime or anti-social behaviour? Please select any that apply

	positive influence	no influence	negative influence
You, or someone you know has been a victim of crime or anti-social behaviour in the last 2 years	102 13%	223 28%	273 34%
You have witnessed crime or anti-social behaviour	117 15%	171 22%	331 42%
You have had face to face contact with the local Police	211 27%	262 33%	90 11%
You have read something written by the local Police e.g. poster, leaflet or website information	193 24%	293 37%	48 6%
Neighbourhood newsletter	167 21%	335 42%	32 4%
National newspapers	78 10%	278 35%	211 27%
Local newspapers	129 16%	241 30%	219 28%
National news on television or radio	89 11%	261 33%	202 25%
Local news on television or radio	109 14%	251 32%	176 22%
Television programmes such as Crimewatch or the Bill	100 13%	332 42%	96 12%
The way your local area looks	213 27%	206 26%	180 23%

The Police and Other Local Public Services

It is the responsibility of the police and other local public services to work together to deal with crime and anti-social behaviour. We would like to hear your views about this.

Q10 Thinking about the police and other local public services, how much would you agree or disagree with the following?

	strongly agree	tend to agree	neither agree nor disagree	tend to disagree	strongly disagree	don't know
The Police and other local public services are successfully dealing with crime and anti-social behaviour in my local area	48 6%	271 34%	118 24%	170 21%	92 12%	17 2%
The Police and other local public services seek people's views about crime and anti-social behaviour in my local area	87 11%	250 31%	159 20%	180 23%	76 10%	27 3%

Q11 Before starting this survey had you ever heard about the following partnerships? Please select all that apply

	I've visited their website	I know who they are and what they do	I've heard of them but don't know what they do	I've never heard of them
Eastbourne Crime Reduction Partnership	23 3%	162 20%	123 15%	420 53%
Safer Hastings Partnership	29 4%	126 16%	110 14%	434 55%
Lewes Crime Reduction Partnership	10 1%	98 12%	77 10%	489 61%
Safer Rother Partnership	22 3%	122 15%	109 14%	447 56%
Safer Wealden Partnership	9 1%	92 12%	72 9%	507 64%
East Sussex Safer Communities Partnership	23 3%	129 16%	137 17%	415 52%

Q11g If you live in Hastings have you seen any of the plasma community TV screens? If so where have you seen them?

35 4%	Priory Meadow Shopping Centre
22 3%	McDonalds
31 4%	Hastings Railway Station/Station Plaza
40 5%	Conquest Hospital
7 1%	Hastings College Refectory
25 3%	Hastings Information Centre
25 3%	Warrior Square Railway Station
5 1%	Carrisbrooke Surgery, Marlborough House
138 17%	I haven't seen any

Q11h	If you live in Hastings have you ever read about the Safer Hastings Partnership in the Hastings Observer?	
	Yes	59 7%
	No	47 6%
	Don't know	19 2%
	I don't read the Hastings Observer	84 11%

Q12 Thinking about community safety, if there was one thing that you would like to be improved in your local area what would that be?

We received 616 responses to this question and where possible, local Crime and Disorder Reduction Partnerships will be acting upon comments to improve local areas.

Q13 Have you been a victim of crime or anti-social behaviour in the last two years?

288 36% Yes (please go to Q13a)

490 62% No

Q13a If yes, please tell us what type of crime or anti-social behaviour this was

286 people told us about the crime or anti-social behaviour they were victim of.

About you

The following questions help us to understand more about the make up of our community, which in turn helps us make decisions and target our services where they are needed. We have a statutory duty to collect this information to show that we are eliminating unlawful discrimination, promoting equality of opportunity and good race relations.

Q14 Are you...

348 44% Male

437 55% Female

Q15 To which of these age groups do you belong?

3 0% under 16

6 1% 16 - 17

50 6% 18 - 24

120 15% 25 - 34

129 16% 35 - 44

167 21% 45 - 54

86 11% 55 - 59

80 10% 60 - 64

95 12% 65 - 74

47 6% 75+

Q16 To which of these ethnic groups do you feel you belong?

701	88%	British
7	0.9%	Irish
3	0.4%	Gypsy/Romany
2	0.3%	Irish Traveller
30	3.8%	Any other white background (please describe below)
1	0.1%	White and Black Caribbean
1	0.1%	White and Black African
3	0.4%	White and Asian
1	0.1%	Any other mixed background (please describe below)
0	0.0%	Caribbean
1	0.1%	African
0	0%	Any other black background (please describe below)
2	0.3%	Pakistani
1	0.1%	Indian
0	0.0%	Bangladeshi
2	0.3%	Any other Asian background (please describe below)
1	0.1%	Chinese
7	0.9%	Any other ethnic group (please describe below)

If your ethnic group was not specified in the list 39 told us about their 'other' ethnic group and you selected one of the 'other' options please describe your ethnic group.

Q17 Please tell us your religion?

5	6%	Buddhist
452	56.7%	Christian
3	0.4%	Hindu
5	0.6%	Jewish
1	0.1%	Muslim
0	0%	Sikh
269	33.8%	None
22	2.8%	Any other religion (please describe below)

If your religion was not specified in the list 23 2.9% please describe your religion.

The Disability Discrimination Act considers a person disabled if they have a longstanding physical or mental condition that has lasted or is likely to last at least 12 months, and this condition has a substantial adverse effect on their ability to carry out normal day-to-day activities.

Q18 Do you consider yourself to be disabled as set out in the Disability Discrimination Act?

81 10% Yes

698 88% No

Actions taken

The feedback from this survey has influenced our decisions and has helped to set the East Sussex Safer Communities Partnership's priorities for 2010 and 2011. The priorities are as follows:

- Reduce actual crime levels in East Sussex and target actions in crime hotspots
- Reduce the Harm Caused by Alcohol Misuse
- Prevent and Reduce Violent Crime (including public place violent crime, sexual offences, domestic violence and hate crime)
- Improve Road Safety
- Reduce Harm Caused by Drugs
- Reduce Adult Re-offending
- Reduce Acquisitive Crime
- Reduce Anti-Social Behaviour and Improve Perceptions
- Prevent Youth Crime
- Improve Communication and Public Confidence

Next Steps

The East Sussex Safer Communities Partnership re-launched this same survey in January 2010. This is because the partnership would like to gather the views of residents throughout the year, and can then explore whether people feel more or less safe over time, depending on the time of year and also, the impact of the partnership's work on a local level to make residents feel safer.

Please go to www.eastsussex.gov.uk/safetysurvey if you would like to complete the questionnaire.