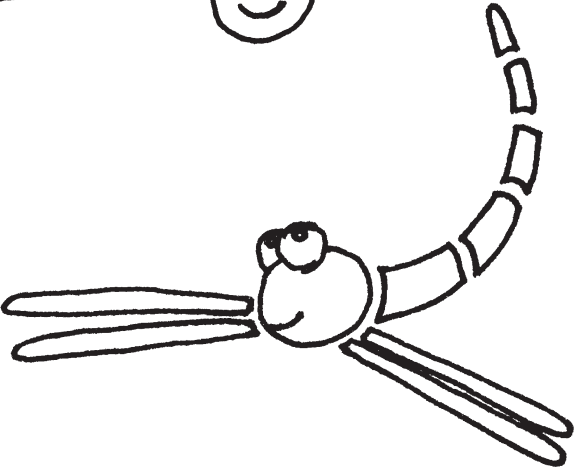
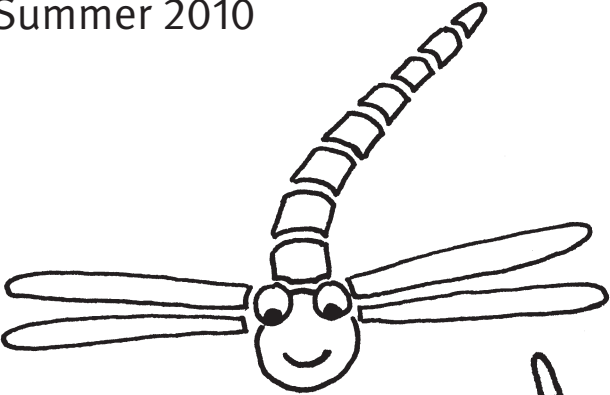


Summer activities for kids

Summer 2010



FREE

july

Camber Castle for kids

Tuesday 27 July at 1pm

Distance: 2 miles (2½ hours). A chance to explore the ruins of one of Henry VIII's castles and enjoy a walk through Rye Harbour Nature Reserve. Age: 5-12 years. Donations appreciated.

Meet at: Brede Lock, Rye Harbour Road (Map Ref: TQ920199). **Public transport:** Buses from Rye. **Leader:** Lucy Balmforth.

Moths for all ages

Wednesday 28 July at 10am

Duration: 1 hour. Bring the family to learn about the moths that fly around Rye Harbour Nature Reserve at night. Age: 5+ year olds. Donations appreciated. **Meet at:** Lime Kiln Information Centre (Map Ref: TQ946186). **Public transport:** Buses from Rye to Rye Harbour. **Leader:** Chris Bentley.

Seashore discovery

Thursday 29 July at 10am

Distance: 1 mile (2 hours). Bring the family to discover wildlife hidden in the saltmarsh and hidden treasures washed ashore on our beach. Age: 3-5 and 6-10 year olds. Donations appreciated. **Meet at:** Rye Harbour car park (Map Ref: TQ942189). **Public transport:** Buses from Rye to Rye Harbour. **Leader:** Lucy Balmforth.

Brilliant bugs!

Friday 30 July at 10.30am

Distance: 1 mile (2 hours). Come and help the Ranger find bugs and creepy crawlies. Discover some mini-wonders. Age: 6-10 year olds. **Meet at:** Red House Common car park, Warrs Hill Road, North Chailey (Map Ref: TQ393216).

Leader: Crispin Kirkpatrick. Charge: £3.

august

Beginners bird watching

Sunday 1 August at 10.30am

Distance: 2 miles (2 hours). Learn how to identify a variety of resident and migrant birds. Binoculars and field guides available to use on the day. Age: 5+ year olds. Donations appreciated. **Meet at:** Rye Harbour car park (Map Ref: TQ942189). **Public transport:** Buses from Rye to Rye Harbour. **Leader:** Chris Bentley.

Ditchling Common dragon hunt

Monday 2 August at 10am

Distance: 1 mile (2 hours). Come and search for dragon and damselflies at Ditchling Common. You will be able to learn more about these fascinating creatures, look for their larvae in small ponds, and make a model to take home. Age: 3-5 and 6-10 year olds. **Pre-booking essential** – 01273 482670. **Meet at:** Ditchling Common Country Park (Map Ref: TQ337180). **Leader:** Ken McManamon. Charge: £3.

Little bird tuck shop

Tuesday 3 August at 10am

Distance: ½ mile (2 hours). Come and find out more about our feathery friends, search for their lunch, play some birdy games and make a bird feeder to take home with you. Lunch will not be part of the activity, but Lane End is a jolly nice place for a picnic. Age: 6-10 year olds. **Pre-booking essential** – 01273 482670. **Meet at:** Lane End Common (Map Ref: TQ402221). **Public transport:** Buses to Lane End Common. **Leaders:** Cathy Cordery and Vicky Pannell. Charge: £3.

Minibeasts

Wednesday 4 August at 2pm

Distance: 1 mile (1½ hours). Bring the family to hunt for minibeasts hiding from view. Age: 3-5 and 6-10 year olds. Donations appreciated. **Meet at:** Lime Kiln Information Centre (Map Ref: TQ946186). **Public transport:** Rye to Rye Harbour. **Leader:** Chris Bentley.

Sand dune detectives

Thursday 5 August at anytime 10-11am

Distance: 1 mile (1¼ hours). Test your detective skills around the dunes and beach at Camber. Form a team with your friends and family to follow a fun trail and learn about coastal wildlife – prizes for young sleuths on completion. Sun protection advised. Age: 3-5 and 6-10 year olds. **Pre-booking essential** – 01797 226488. **Meet at:** Coastal Control Office, Central Car Park, Old Lydd Road, Camber (car parking charges apply) (Map Ref: TQ966186). **Public transport:** Bus 100 passes through Camber. **Leaders:** Shorelock Holmes and Doctor Flotsam. Charge: £3.

Summer scavenger hunt

Friday 6 August at 10am

Distance: 2 miles (1½ hours). Visit the Cuckoo Trail for a Scavenger Hunt, follow clues to find various natural items and collect a prize at the end. Age: 6-10 year olds. **Pre-booking essential** – 01273 481654. **Meet at:** The Cuckoo Trail car park, Station Road, Hellingly (Map Ref: TQ584122). **Leader:** Vicky Pannell. Charge: £3.

Toddlers and pre-school tricycle and bicycle

Tuesday 10 August at 10am

Distance: 2 miles (2 hours). Bring your friends and family to Shinewater Park for a short ride around the lake (mainly flat and surfaced). We will look for signs of wildlife along the way. Please wear a helmet. Picnic is not part of the activity, but Shinewater Park could be a nice place for one afterwards. Age: 3-5 year olds. **Pre-booking essential** – 01273 481654. **Meet at:** The main entrance to Shinewater Park, Larkspur Drive, Eastbourne (Map Ref: TQ616038). **Leader:** Vicky Pannell. Charge: £3.

Hunt for the missing purse

Wednesday 11 August at 2pm

Distance: 2 miles (2 hours). Take part in a special marine week hunt along the Rye Harbour shore for egg cases of sharks, skates and rays. Age: 3-5 and 6-10 year olds. Donations appreciated. **Meet at:** Lime Kiln Cottage Information Centre (Map Ref: TQ946186). **Public transport:** Buses from Rye. **Leader:** Lucy Balmforth.

Wildlife wonder wander

Thursday 12 August at 10.30am

Distance: 1½ miles (2 hours). Join the Ranger for a wildlife walk around Chailey Common Nature Reserve and see what we discover. Age: 6-10 year olds. **Meet at:** Pound Common car park, North Common Road, North Chailey (Map Ref: TQ378207). **Leader:** Crispin Kirkpatrick. Charge: £3.

Seashore discovery

Friday 13 August at 10am

Distance: 1 mile (2 hours). Search for creepy crawlies in the saltmarsh and hidden treasures in the strandline. Age: 6-10 year olds. Donations appreciated. **Meet at:** Rye Harbour car park (Map Ref: TQ942189). **Public transport:** Buses from Rye. **Leader:** Lucy Balmforth.

Underwater wonders

Friday 13 August at 10am

Distance: 2 miles (2 hours). Come and join us for some fun and games at Forest Way Country Park. We will be hunting for some of the fascinating creatures that live in the pond and finding out a bit more about them. Lunch will not be part of the activity, but there are some lovely spots for a picnic if you want to do that afterwards. Age: 6-10 year olds. **Pre-booking essential** – 01273 482670. **Meet at:** Hartfield Playgroup at the old station (Map Ref: TQ479362). **Leader:** Sam Cordery. Charge: £3.

Pond dipping at Castle Water

Wednesday 18 August at 11am

Distance: 2 miles (2 hours). Bring the family to explore Castle Water and find out what wildlife is lurking amongst the reeds. Pond nets and field guides will be supplied. Age: 6-10 year olds. **Meet at:** Brede Lock, Rye Harbour Road (Map Ref: TQ920199). **Public transport:** Buses from Rye. **Leader:** Lucy Balmforth.

Postcards from the sea

Friday 20 August at 10am

Distance: 1 mile (2 hours). Come down to the beach, explore the strandline, and take home a postcard made from things you have found! Age: 6-10 years old. Donations appreciated. **Meet at:** Lime Kiln Cottage Information Centre (Map Ref: TQ946186). **Public transport:** Buses from Rye. **Leader:** Lucy Balmforth.

Camber Castle bug hunt and picnic

Sunday 22 August at 12 noon

Distance: 2 miles (3 hours). A family picnic in Camber Castle will precede a hunt for freshwater wildlife, from frogs and newts to leeches in Castle Water. Age: 3-5 and 6-10 years old. Donations appreciated. **Meet at:** Brede Lock, Rye Harbour Road (Map Ref: TQ920199). **Public transport:** Buses from Rye. **Leader:** Chris Bentley.

Birds, bats and bugs

Wednesday 25 August at 6.30pm

Distance: 2 miles (2 hours). An evening stroll to Ternery Pool followed by a closer look at some nocturnal creatures with the help of bat detectors. Age: 6-10+ years old. Donations appreciated. **Meet at:** Rye Harbour car park (Map Ref: TQ942189). **Public transport:** Buses from Rye. **Leader:** Chris Bentley.

Treasure hunt

Friday 27 August at 12 noon

Distance: 1 mile (2 hours). Follow a map with clues to test your brainpower around Rye Harbour Nature Reserve. Collect a map and clues between 12 noon – 2pm, prizes for all who enter. Charge: £2. Age: 6-10 years old. **Meet at:** Lime Kiln Cottage Information Centre (Map Ref: TQ946186). **Public transport:** Buses from Rye. **Leader:** Lucy Balmforth.

Pebbles, pebbles everywhere

Saturday 28 August at 2pm

Distance: 1 mile (1½ hours). Rye Harbour is a land of stones, but every one is different! Create some artwork on the beach from the pebbles. Age: 6-10 years old. Donations appreciated. **Meet at:** Lime Kiln Cottage Information Centre (Map Ref: TQ946186). **Public transport:** Buses from Rye. **Leader:** Lucy Balmforth.

Beach beasties

Sunday 29 August at 10am

Distance: 1 mile (2 hours). Bring the family to hunt for creatures living in the shallow sea. Nets available to borrow, but bring your own if you have one. Please wear suitable footwear for paddling/wading in the sea. Age: 6-10 years old. Donations appreciated. **Meet at:** Lime Kiln Cottage Information Centre (Map Ref: TQ946186). **Public transport:** Buses from Rye. **Leader:** Lucy Balmforth.

september

Dizzy the dragonfly's nature trail

Wednesday 1 September at 10am

Distance: 1½ miles (2 hours). Come and explore the nature trail on Ditchling Common. Learn about Dizzy the Ditchling Dragonfly and discover other wildlife. There will be a chance to try pond dipping, play games and to meet new friends. Age: 3-5 and 6-10 years old. **Pre-booking essential** – 01273 482670. **Meet at:** Ditchling Common Country Park Car Park (Map Ref: TQ337180). **Leader:** Ken McManamon. Charge: £3.



“Investing in your Future”

Cross-border cooperation programme 2007-13
part-financed by the European Union
(European Regional Development Fund)

East Sussex County Council invite you to bring your kids to have fun, get dirty and make friends while learning about the countryside and the environment surrounding us.

Most activities last about two hours and cost £3, unless otherwise stated. Children must be accompanied by an adult. Some events need to be booked in advance so that we can plan for numbers of staff needed. Dogs are welcome unless it is stated otherwise. If you need directions to our sites or further information, please contact Vicky Pannell on 01273 481654.

Other events and guided walks for all ages and abilities can be found in Exploring East Sussex, and cycle rides can be found in Cycling East Sussex, contact as above.

If you would like our information in large print, in Braille, on audio tape or in another language, please contact 01273 481654 or visit eastsussex.gov.uk.