




Location Map

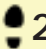


Location Symbols

-  Bus stop/Request stop
-  Railway Station
-  Walk Location

Essential Information

Distance:
4.5 miles/7.5 kms

Walk grade:
 A generally easy walk with gentle hills, some stiles and some muddy paths (depending on weather)

Maps:
OS Explorer 122 & 135
OS Landranger 198

Start/Finish:
The Cock Inn TQ 354199

Public Transport:
Buses: Regular bus services operate Monday to Saturday between Haywards Heath and Lewes/Brighton with a stop in Wivelsfield
Trains: Wivelsfield station (approx. 2 miles from the village) is on the London to Lewes/Brighton line and has a regular service

Parking:
Parking is available in Wivelsfield Green



Wivelsfield Green Walk



Paths to Prosperity

East Sussex is a welcome haven for walkers in the busy south-east of England, with over two thirds of the County covered by the High Weald and Sussex Downs Areas of Outstanding Natural Beauty.

There is also a wealth of picturesque villages, country houses and parkland hidden within its rolling landscape, waiting to be discovered.

Please come and enjoy the unique splendours of our countryside, but please also support the local businesses that help make the countryside the vibrant place that it is today.

The Countryside Code

- Be Safe - plan ahead and follow any signs
- Leave gates and property as you find them
- Protect plants and animals, and take your litter home
- Keep dogs under close control
- Consider other people

Tourist Information Centre

187 High Street, Lewes

Tel: 01273 483448

Fax: 01273 484003

email: lewestic@lewes.gov.uk

The information contained in this leaflet was correct at the time of printing (January 2005)

Refreshments and Local Services

(see map for location)

- 1 The Cock Inn**
Public House and Restaurant -
01444 471668
- 2 Wivelsfield Green Post Office and Stores**
Post Office and Convenience Store
- 01444 471244
- 3 More House Farm Cattery**
Boarding Kennels - 01444 471716
- 4 The Homestead**
Bed & Breakfast Accommodation -
Homestead Lane, Burgess Hill,
01444 246899
- 5 The Royal Oak**
Public House and Restaurant -
01444 471263
- 6 Coldharbour Nurseries**
Garden Centre - 01444 471239
- 7 Heath Farm**
Self Catering Accommodation -
South Road, 01273 890712

Please note that inclusion of business details in this leaflet does not constitute an endorsement of the business by East Sussex County Council or its agents.

We hope that you enjoy the walk in this leaflet, which is one of a series produced by East Sussex County Council.

Copies of the leaflets for other walks in the series are available from Tourist Information Centres and libraries or direct from East Sussex County Council, by contacting the Rights of Way Team:-

By phone on:-
01273 482250 / 482354 / 482324

By post at:-
Transport and Environment Department
County Hall
St. Anne's Crescent
Lewes BN7 1UE

By e-mail at:-
rightsofway@eastsussex.gov.uk

By downloading from the website at:-
www.eastsussex.gov.uk

If any problems are encountered on the walk please report them to the above contact points.

This route is based on one published by Countryside Books in the book *Pub Strolls in East Sussex*. If you enjoyed the walk and would like to explore further similar ones, the guide book can be purchased through local booksellers:-
ISBN 1-85306-670-2

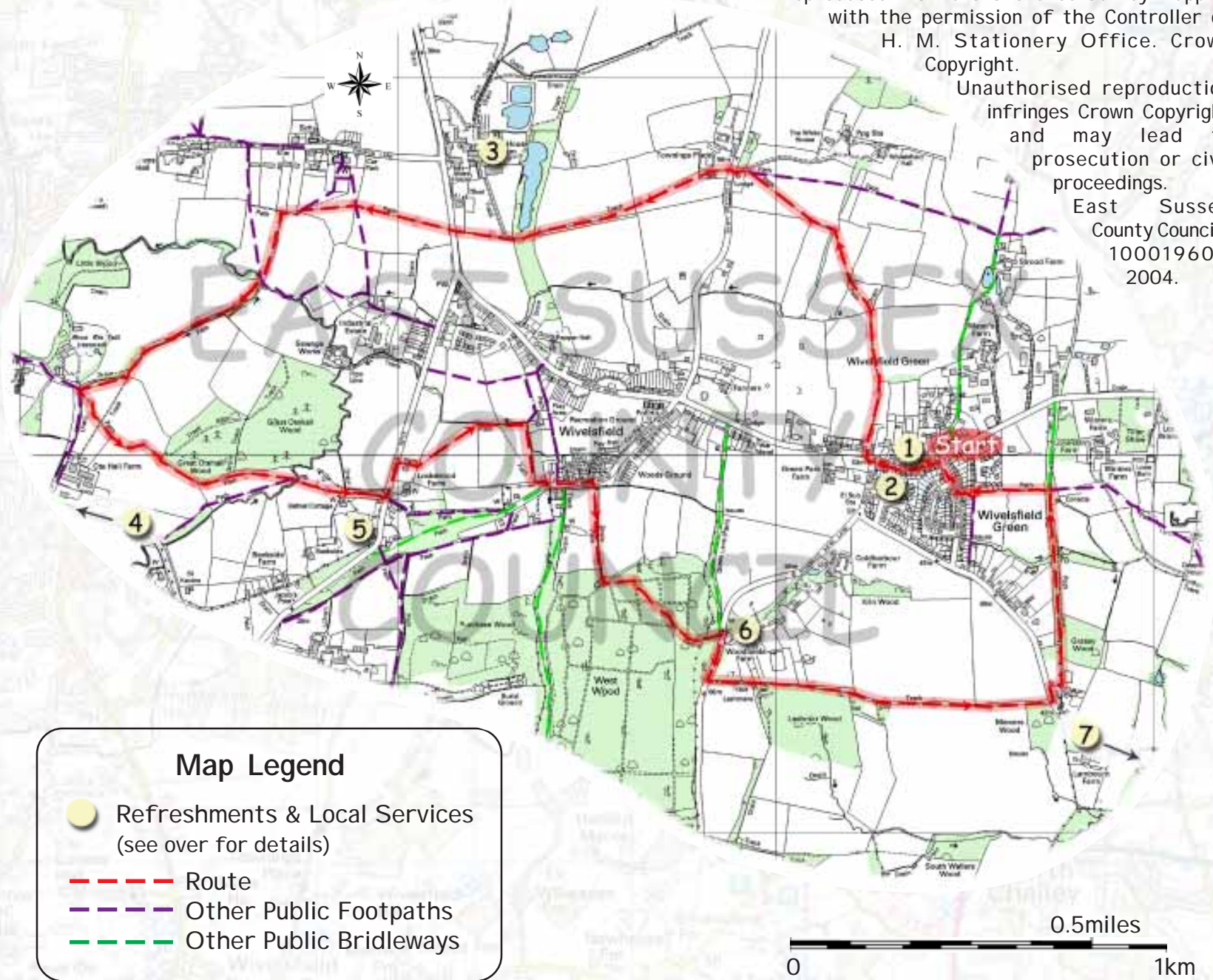
Printed on elemental chlorine-free paper using wood pulp obtained from sustainable forests.

Wivelsfield Green Walk





Reproduced from the Ordnance Survey Mapping with the permission of the Controller of H. M. Stationery Office. Crown Copyright.

Unauthorised reproduction infringes Crown Copyright and may lead to prosecution or civil proceedings.

East Sussex County Council - 100019601, 2004.



Map Legend

-  Refreshments & Local Services (see over for details)
-  Route
-  Other Public Footpaths
-  Other Public Bridleways



Woodland path in Autumn

0 0.5miles 1km

Starting from the Cock Inn, turn right to follow North Common Road. Pass the Village Stores and Post Office, before turning right onto the signposted footpath into the Builders Merchants yard. Immediately after passing the building on your left, turn left, and then immediately right to cross the stile into the neighbouring field. The footpath continues to follow the field edge, running parallel to the builders yard.



View towards Wivelsfield Church

Follow the field edge path to the first gap into the neighbouring field. Cross into the adjacent field and continue to follow the path in the same line, but with the hedge now to your left. Cross the bridge in the field corner and continue to follow the well defined path in the direction waymarked. Beyond the next stile, cross the field in the direction indicated, to reach a signpost. Turn left and follow the driveway to Slugwash Lane.

Cross the lane and continue along the signposted footpath, initially through a small section of garden. Cross the next field heading towards a stile, and beyond this, cross another field in the direction indicated to join a surfaced track in the field corner. Keep to the track for a short distance before following the waymarked path across the next field to reach the main road.

Cross the road and continue along the signposted path across the field in the direction indicated. Continue straight ahead through the next field following the well defined path, passing to the south of the church. From the field corner, follow the short section of enclosed track before turning left as waymarked to follow the field edge path. Cross the stile at the bottom of the field and follow the wide, enclosed track.

On reaching the stile at the end of the track, turn right and follow the field edge path to the next signposted junction of paths. Stay within the field, and bearing left, continue to follow the field edge path keeping the hedge on your right. From the stile in the field corner, continue in the same direction following the field edge route, with the woodland on your left.

Before reaching the corner of the next field, cross the corner to reach a footbridge. Continue along the enclosed footpath and driveway to the main road. Turn left and follow for a short distance before turning right onto the signposted footpath.

After the first, small field, cross the second diagonally as indicated, then follow the path along the edge of the next field with the hedge on your left. Turn right at the signpost in the field corner, and continue along the field edge. From the stile in the field corner, follow the enclosed path to reach Eastern Road. Turn left and follow the road, passing the bridleway on the right, before turning right onto the footpath, crossing the footbridge.

Follow the well defined path along the field edge and into the woodland. After a short distance, turn left at the footpath waymark post and follow the path through the woodland, keeping to the line of waymark posts to reach the Hundred Acre Lane. Turn right and follow the lane for approximately 130 metres (140 yds.) before turning left onto the bridleway. Follow the track through the woodland and then along the field edge to reach the road.



View to the South Downs

Turn left and then right to join the signposted bridleway for approximately 550 metres (600 yds.) to a path junction. Turn left at the signpost and follow the route across the next two fields, and then along a narrow path between the houses to reach Downsvie Drive. Turn right and at the road end junction, turn left to reach the Cock Inn, and the end of the walk.