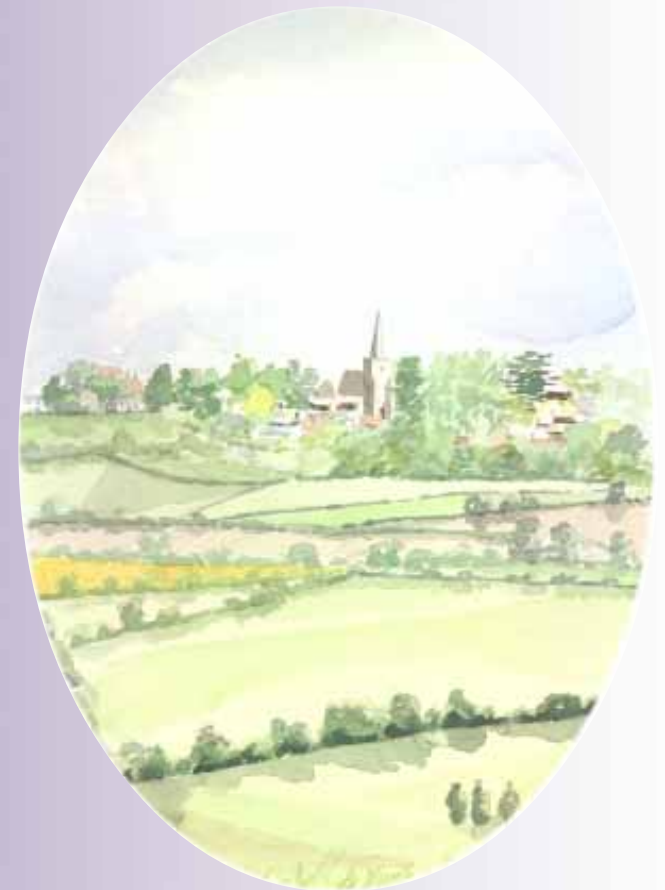





Rotherfield Parish Walks



Location Map



Location Symbols

-  Bus stop/Request stop
-  Railway Station
-  Walk Location

Essential Information

Distance:
8.5 miles/14 kms

Walk grade:

3 Typical country walk with hills, some stiles and muddy paths (depending on weather)

Maps:

OS Explorer 135
OS Landranger 188

Start/Finish:

Crowborough Railway Station
TQ 535297

Public Transport:

Buses: A regular bus service operates between Tonbridge and Crowborough Station at Jarvis Brook.

Trains: Crowborough station at Jarvis Brook is on the Uckfield to London line which has a regular seven day service.

Parking:

A public car park is located off Crowborough Hill almost opposite Station Approach



Paths to Prosperity

East Sussex is a welcome haven for walkers in the busy south-east of England, with over two thirds of the County covered by the High Weald and Sussex Downs Areas of Outstanding Natural Beauty.

There is also a wealth of picturesque villages, country houses and parkland hidden within its rolling landscape, waiting to be discovered.

Please come and enjoy the unique splendours of our countryside, but please also support the local businesses that help make the countryside the vibrant place that it is today.

The Countryside Code

- Be Safe - plan ahead and follow any signs
- Leave gates and property as you find them
- Protect plants and animals, and take your litter home
- Keep dogs under close control
- Consider other people

Refreshments and Local Services

(see map for location)

- 1 Whistle Stop Cafe**
Restaurant - 01892 663518
- 2 The Millbrook Garden Company Ltd**
Garden Centre and Restaurant - 01892 663822
- 3 The Boar's Head Inn**
Public House and Restaurant - Boars Head, Nr Crowborough, 01892 652412
- 4 Yew House**
Bed and Breakfast Accommodation - 01892 610522
- 5 Jarvis Brook Bakery**
Bakery - 01892 662490
- 6 Ultimate Animals**
Pet Supplies Store - 01892 667733

We hope that you enjoy the walk in this leaflet, which is one of a series produced by East Sussex County Council.

Copies of the leaflets for other walks in the series are available from Tourist Information Centres and libraries or direct from East Sussex County Council, by contacting the Rights of Way Team:-

By phone on:-
01273 482250 / 482354 / 482324

By post at:-
Transport and Environment Department
County Hall
St. Anne's Crescent
Lewes BN7 1UE

By e-mail at:-
rightsofway@eastsussex.gov.uk

By downloading from the website at:-
www.eastsussex.gov.uk

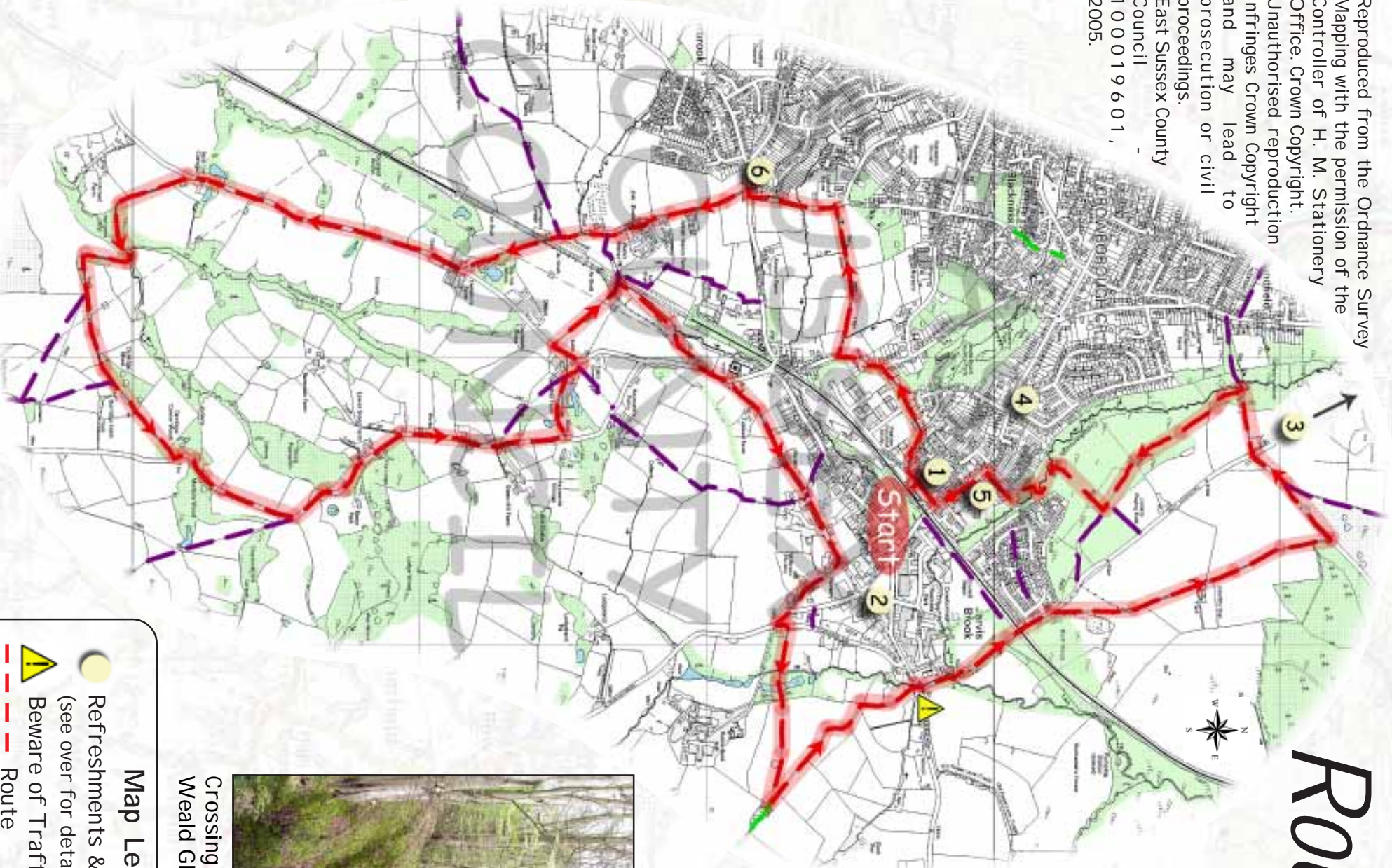
If any problems are encountered on the walk please report them to the above contact points.

Please note that inclusion of business details in this leaflet does not constitute an endorsement of the business by East Sussex County Council or its agents.

Printed on elemental chlorine-free paper using wood pulp obtained from sustainable forests.

Rotherfield Route 5






Reproduced from the Ordnance Survey
Mapping with the permission of the
Controller of H. M. Stationery
Office. Crown Copyright.
Unauthorised reproduction
infringes Crown Copyright
and may lead to
prosecution or civil
proceedings.
East Sussex County
Council
1 0 0 0 1 9 6 0 1 ,
2005.



Crossing a deep High
Weald Ghyll



Map Legend

-  Refreshments & Local Services
(see over for details)
-  Beware of Traffic
-  Route
-  Other Public Footpaths
-  Other Public Bridleways



View from the walk

Starting from the station at Jarvis Brook, turn left to follow Farningham Road. Immediately after passing Riverside Gardens, turn right to follow the surfaced footpath beside the stream. Continue on this path to the road, before turning left to follow the road for a short distance, and then turn right onto the signposted byway. Follow the track to reach Luxford Road, turning left and following the road to the junction with Walshes Road.

Cross Walshes Road and continue in the same direction, on the signposted footpath opposite, following the driveway to Walsh Manor. On reaching the main entrance to the manor, take the right hand fork (signposted to Nightingales). Continue to follow the drive to the right of the buildings, and along the track to Nightingales. Continue to follow the route beyond to reach Hadlow Down Road.

Turn right and follow the road for a distance of approximately 1 kilometre (2/3 mile) before turning left onto the signposted byway. The route now continues for the length of the byway, almost 1.5 kilometres (1 mile) to its junction with Steep Road. Turn left to follow the road for a further

1.5 kilometres (1 mile) before turning left onto the next signposted byway. After this short section of byway, turn left back onto Hadlow Down Road.

Follow the road for a short distance before turning right onto the signposted footpath. Follow the field edge path, and from the gate in the field corner, continue across the next field to a stile. Instead of crossing the stile, turn right and follow the path along the field edge, with the field boundary and stream to your left.

Before reaching the corner of the field, bear right heading uphill towards a stile. Continue along the edge of the next field as waymarked, and after a small area of woodland, turn left onto the road. Follow the road for a short distance before turning right onto the byway leading to Tubwell Farm. Follow for approximately 730 metres (800 yds.) before turning right beside Leyland Manor. Continue along this route to reach a concrete driveway, and bear left to follow this to the lane. Turn right, and then left at the road junction, and after a short distance, turn right onto the signposted footpath.

Follow the enclosed path crossing the deep ghyll and onwards passing some lakes. At the end of the fenced section, continue uphill with the field boundary to your right. Near the top of the hill, bear left as signposted, to reach a path junction. Turn left and follow the bridleway for a distance of approximately 700 metres (750 yds.) to reach the main road at the bottom of the hill. Cross the road, taking care, and follow Palesgate Lane opposite. After crossing the footbridge beside the ford, continue for a further 400 metres (440 yds.) before bearing right onto the signposted byway.

Follow the byway for a total distance of 1 kilometre (2/3 mile) and turn left at the end onto the narrow lane. Follow the lane to the next road junction, and cross the road onto the signposted footpath opposite. Continue along the route, heading downhill through a series of kissing gates, before turning left at the next path junction. Follow the well defined path, and after crossing the stile into the woodland, follow the waymarked route ahead. At the next main path junction, turn right to head downhill. Turn left at the bottom to follow the watercourse, before turning right to cross the footbridge. After the bridge, turn left and pass the garages to reach the road.

Turn right and follow the road to its junction with Crowborough Hill, turn left down the hill to the pedestrian crossing. After the crossing, continue downhill before turning right into Station Approach to reach the station and the end of the walk.



View along a Byway